



# **E** ELLIS

## IMPLEMENT / SHORT LINE PRICE BOOK

\*\*Prices subject to change, call for current pricing

[ellisequipment.com](http://ellisequipment.com)

435-752-4311

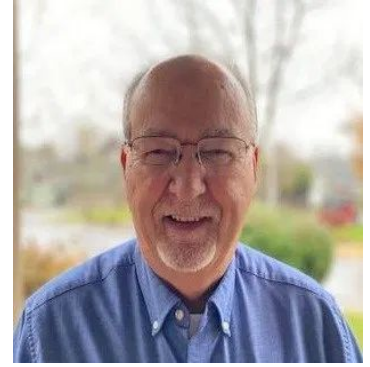
# Your Team



Clair Ellis  
President  
435-752-4311  
clair@ellisequipment.com



Nik Hess  
Vice President  
435-752-4311  
nik@ellisequipment.com



Kevin Shukle  
Territory Sales  
509-435-1032  
kevin@ellisequipment.com



Tyson Bowman  
Territory Sales  
208-851-1011  
tyson@ellisequipment.com



Kameron Olsen  
Inside Sales  
801-822-8717  
kameron@ellisequipment.com



Blake Chapman  
Territory Sales  
208-260-0052  
blake@ellisequipment.com



Shaun Kurek  
Parts & Service Manager  
435-752-4311  
shaun@ellisequipment.com

## Ellis Equipment Headquarters

2759 South Highway 89  
Wellsville, UT 84339  
Main: 435-752-4311  
www.ellisequipment.com

## Ellis Equipment NorthWest

c/o Kool Pak LLC  
16221 SE 98th Avenue  
Clackamas, OR 97015



Nicole Schiers  
Accounting  
435-752-4311  
ap@ellisequipment.com



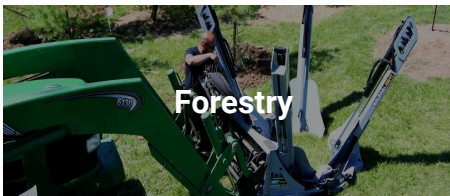
## Cutters & Shredders

Brush Mulchers, Hydr	Baumalight
Flail Shredders	Baumalight
Rotary Cutters, 5'-7' XHD	Brown
Rotary Cutters, 5'-7' XHD	Tennessee River
Rotary Cutters, Hydraulic	Martatch
Stump Grinders	Baumalight
Wood Chippers	Wallenstein



## Field & Dirt Work

Backhoes	Wallenstein
Box Scrapers	Bison
Bed Shaper	Bison
Cultivators	Remlinger
Dike Forming	Bison
Disc Harrow	Bison
Ditchers, V-Blade	Bison
Ditchers, PTO	Remlinger
Drill, Planting	Remlinger
Fertilizer Tanks	Demco
Flail Shredders	Baumalight
Graders, Pull-Type	Art's-Way
Harrow Cart	Bison
Harrow, Spring, Roller	Remlinger
Land Planes	Art's-Way
Land Rollers	Big Jim
Mighty Dumper	JBM
Multi-Tillage	Bison
Offset Discs	Bison
Plastic Mulch Layer	Bison
Plow, Moldboard	Art's-Way, Bison
Plow, Switch Plow	Harrell
Post Hole Diggers, Hydr	Belltec
Rear Blades	Bison, TR
Rock Drills	Belltec
Rock Rake & Picker	Remlinger
Sprayers	Demco
Strip Tillage	Remlinger
Subsoil Rippers	Bison
Tillers	Bison
Tillers	Martatch
Vertical Tillage	Remlinger



## Forestry

Brush Mulchers	Baumalight
Firewood Processors	Wallenstein
Log Fork	Martatch
Log Grapples	Wallenstein
Log Splitters	Wallenstein
Log Trailers	Wallenstein
Log Winches	Wallenstein
Stump Grinders	Baumalight
Tree Puller	Martatch
Tree Shear	Baumalight
Tree Spades	Baumalight
Wood Chippers	Wallenstein



## Loader Attachments

Backhoes	Wallenstein
Backhoe Thumbs	Wallenstein
Bale Slicer	Remlinger
Bale Spears & Handlers	Martatch, Wifo
Brush Mowers/Mulchers	Baumalight
Buckets	Martatch
Forks	Martatch
Grapples	Martatch
Loader Mounts/Adapters	Martatch
Log Splitters	Wallenstein
Pallet Forks	Martatch
Post Hole Drives & Bits	Belltec
Snow Blowers, Hydr	Wifo
Blades & Pushers	Martatch
Stump Grinders	Baumalight
Tiller	Bison, Martatch
Tree Puller	Martatch
Tree Shear	Baumalight
Tree Spades	Baumalight
Trenchers	Baumalight
Wood Chippers	Wallenstein



## Grain Handling

Belt Conveyors	Bauman, Sudenga
Bin Sweep	OX (Sudenga)
Grain Augers	Sudenga, Demco
Grain Carts	Demco
Grain Dumper	JBM
Header Trailers	AgriMaster, Demco
Header Trailer High Speed	Demco
Transfer Augers, Conveyors...	OX (Sudenga)



## Manure Handling

Agitator	Balzer
ATV Spreader	Wallenstein
Buckets	Martatch
Dump Trailer	JBM
Forks	Martatch
Manure Injector	Balzer
Manure Pump	Balzer
Manure Slurry	Enorossi
Manure Spreader	Art's Way
Manure Spreader Push	Hagedorn
Manure Tank	Balzer
Small Spreader	Wallenstein
Stall Scraper	Martatch
Sweeper	Martatch
Tire Scraper Rubber	Mensch



## Feeding & Bedding

Bale Feeders	Giltrap
Feed Bunks	JBM
Feed Wagons	JBM
Hammer Mills	Art's-Way, Bison
Mixer-Mills	Art's-Way
Roller Mills	Art's-Way



## Hay & Forage

Bale Feeders	Giltrap
Bale Spears & Handlers	Martatch
Bale Wrappers	Enorossi
Corn/Hay Heads	Dion
Fluffer	Bauman
Forage & Dump Boxes	Art's-Way
Forage Harvester	Dion
Hay Mowers, Disc, Sickle	Enorossi
Hay Rakes, Rotary & Wheel	Enorossi



## Other Equipment

ATV Sprayers	Demco
Backhoes	Wallenstein
Cement Mixer	Bison
Combine Hopper Topper	Demco
Fence Wire Roller	Bison
Fertilizer Spreaders	Enorossi
Fertilizer Tanks	Demco
Forklift, 3-Point	Wifo
Generators, Gas	Wallenstein
Generators, PTO	Baumalight
Plastic Mulch Layer	Bison
Post Drivers	Big Jim
Post Hole Diggers, Hydr	Belltec
Rock Augers	Belltec
Snow Blades	Martatch
Snow Blowers, PTO	Wifo
Stump Grinders	Baumalight
Tillers	Bison
Tree Spades	Baumalight
Wagons (Running Gear)	AgriMaster
Wire Roller	Bison

## INDEX:

<b>MFG:</b>	<b>PAGE#</b>
Agri Master	2
Art's Way	3
Balzer	7
Baumalight	8
Bauman	10
Belltec	13
Big Jim	16
Bison	18
Brown	21
Demco	22
Dion	24
Giltrap	26
Hagedorn	27
Harrell	28
JBM	29
Martatch	30
Remlinger	32
Rossi	38
Sudenga	41
Tennessee River	45
Wallenstein	47
Wifo	54



### COMBINE HEADER TRAILERS

	Stock No	Weight	List
Header Trailer, 2 axles, 84" treadwidth, 1 3/4" spindles, 6-bolt hubs, ADD beam Pkg, Add Wheels	RS70HC	550#	\$2,745
20' Beam package, crate & tongue, 2 15' center reach, 20' upper rail, 16' lower rail	RS70HC-20	450#	\$2,078
25' Beam package, crate & tongue, 2 15' center reach, 20' upper rail, 16' lower rail	RS70HC-25	550#	\$2,314
30' Beam package, crate & tongue, 2 18' center reach, 2-piece bridged 30' upper rail, 20" lower rail	RS70HC-30	850#	\$3,431
36' Beam package, crate & tongue, 2 21'9" center reach, 2-piece bridged 36' upper rail, 24" lower rail	RS70HC-36	1020#	\$3,863
Wheel/Tire, new 225/75D15 highway trailer tires on 15x6 wheels, set of 4 (rated at 10160# gross)		234#	\$1,278
Wheel/Tire, low-profile 20 3/4-10" highway tires on wheels, set of 4 (rated at 6600# gross)		134#	\$941

### 4-WHEEL WAGONS

	Stock No	Weight	List
5-Ton, 5-bolt hubs, 1.75" spindles, 78" treadwidth, 12'-15' wheelbase ADD Tires	RS50	440#	\$2,596
8-Ton, 6-bolt hubs, 1.75" spindles, 78" treadwidth, 12'-15' wheelbase, ADD wheels & tires	RS80	550#	\$2,840
10-Ton, 6-bolt hubs, 2" spindles, 78" treadwidth, 12'-15' wheelbase, ADD wheels & tires	RS105	610#	\$2,961
12-Ton, 8-bolt hubs, 2.25" spindles, 78" treadwidth, 12'-15' wheelbase, ADD wheels & tires	RS120	725#	\$3,367
14-Ton, 8-bolt hubs, 2.5" spindles, 86" treadwidth, 12'-15' wheelbase, ADD wheels & tires	RS140	850#	\$3,996
15-Ton, rocking bolster, 8-bolt hubs, 2.75" spindles, 86" tread, 12' wheelbase, Add wheels & tires	RS150RA	1600#	\$5,562
20-Ton, rocking bolster, 8-bolt hubs, 3" spindles, 86" treadwidth, 12' wheelbase, ADD wheels & tires	RS200RA	2000#	\$6,961
25-Ton, rocking bolster, 10-bolt hubs, 4" spindles, 86" treadwidth, 16' wheelbase, 445x22.5 used tires	RS250RA		\$8,725

### 6-WHEEL WAGONS

	Stock No	Weight	List
12-Ton 8-bolt hubs, 2.25" spindles, 78" treadwidth, 17'-20' wheelbase, ADD wheels & Tires	RS125T	1030#	\$4,361
14-Ton 8-bolt hubs, 2.25" & 2.5" spindles, 86" treadwidth, 17'-20' wheelbase, ADD wheels & Tires	RS140T	1570#	\$5,680

### ADD WHEELS & TIRES & OPTIONS

	Stock No	Weight	List
Tires for 5-bolt, used 15" truck tire mounted on 15x6 5-bolt wheel, set of 4		212#	\$640
<b>6-BOLT OPTIONS</b>			
Tire/wheel, used 245R16, mounted on 16x8 6-bolt wheel, set of 4 (rated at 12,340#)		300#	\$924
Tire/wheel, new 11L15 8-ply, mounted on 15x8 6-bolt wheel, set of 4 (rated 10160# at 36psi)		246#	\$1,404
Tire/wheel, new 11L15 12-ply HD highway, mounted on 15x8 6-bolt wheel, set of 4 (rated 15840# at 90psi)		395#	\$2,116
<b>8-BOLT OPTIONS</b>			
Tire/wheel, new 12.5L15 10-ply, mounted on 15x10 8-bolt wheel, set of 4 (rated 13680# at 44psi)		324#	\$1,956
Tire/wheel, new 16.5L16.1 10-ply, mounted on 16.1x14 8-bolt wheel, set of 4 (rated at 20800# at 36psi)		608	\$3,893
Tire/wheel, used 12x22.5, mounted on 22.5x8.25 8-bolt HD wheel, set of 4 (rated- 30000#)		900#	\$1,600
Tire/wheel, used 425x22.5 (16.5" wide), mounted on 22.5x13 8-bolt wheel, set of 4 (rated -44000#)		1028#	\$2,089
Brakes, hydraulic 2-wheel drum brakes, for 15-25 ton wagons, operated by tractor remote			\$3,272
Extra long reach, 8-14 ton wagons, PER EXTRA FOOT			\$31
Extra long reach, 15-25 ton wagons, PER EXTRA FOOT			\$58

**FREIGHT:** FOB Wellsville, UT: Delivery Header Trailer \$900, Wagon \$600. 1/2 off delivery for 3 units. Free for 8 units  
All orders are also subject to the dealer Sales & Security Agreement, our latest Discounts and Terms, and Credit Approval



**MOUNTED LAND PLANES**

	Stock No	Weight	List
2400, 24'x22" folding box, floating hitch, 4 1/2" cylinder, 150-180 hp, ADD hitch, ADD tires	V2400	5500#	\$39,602
3000, 30'x22" folding box, floating hitch, 4 1/2" cylinder, ADD hitch, ADD tires	V3000	6000#	\$43,012
Hitch, quick-hitch attachment, replaces hitch bar	558000		\$3,511
Hitch bar, Cat 3N, Models 2000, 2400	V180580		\$903
Hitch bar, Cat 4N, Models 2000, 2400, 3000	V180585		\$703
Tire assembly, two single casters, two 26x12.00 flotation tires, for all models	402740		\$3,884
Tire assembly, two dual casters, four 26x12.00 flotation tires, for all models	V180597		\$6,673
S-Tine harrow attachment, Model 2400	V180020		\$10,104
S-Tine harrow attachment, Model 3000	605600		\$12,686

**PULL-TYPE GRADER**

	Stock No	Weight	List
12'x 30" tall blade, hydr angle/tilt/lift, box ends, 11Lx15 tires, for 60-180 HP w/3 valves	LS1200S	3000#	\$18,631
14'x 30" tall blade, hydr angle/tilt/lift, box ends, 11Lx15 tires, for 60-200 HP w/3 valves	LS1400S	3150#	\$19,125
16'x 30" tall blade, hydr angle/tilt/lift, box ends, 11Lx15 tires, for 60-200 HP w/3 valves	LS1600S	3300#	\$20,627
12'x 30" tall blade, plus hydraulic rear steering, for 60-180 HP w/4 valves	LS1200R	3000#	\$21,581
14'x 30" tall blade, plus hydraulic rear steering, for 60-200 HP w/4 valves	LS1400R	3150#	\$22,074
16'x 30" tall blade, plus hydraulic rear steering, for 60-200 HP w/4 valves	LS1600R	3300#	\$23,577

**FREIGHT:** Per factory quote from Armstrong, IA  
**ASSEMBLY (estimated):** Land Plane 16 hrs, Grader 4 hrs  
**FACTORY WARRANTY:** Parts- 1 year, FOB factory. Local labor- 1 Year, at average dealer cost. With limitations  
 All orders are also subject to the dealer Sales & Security Agreement, our latest Discounts and Terms, and Credit Approval



### MIXER-MILLS

	Stock No	Weight	List
6105 w/20" hammer mill, 105 bu tank, mech auger swing & drive, tractor hydr, 540 PTO, ADD screens	597210	3800#	\$52,884
6140 w/20" hammer mill, 140 bu tank, hydr auger swing & drive, tractor hydr, 540 PTO, ADD screens	610010	5000#	\$67,618
7165 w/26" hammer mill, 165 bu tank, hydr auger swing & drive, self-cont hydr, 540 PTO ADD screens	634600	6000#	\$86,197
8215 w/26" hammer mill, 215 bu tank, hydr auger swing & drive, self-cont hydr, 540 PTO, ADD screens		7200#	\$105,953
Screen, 20" for Model 6105/6140, choose 1/8, 5/32, 3/16, 3/8, 1/2, 5/8, 3/4, 1, 1 1/4, 1 1/2, 2"	643....		\$600
Screen, 26" for Model 6530/7165, choose 1/8, 5/32, 3/16, 3/8, 1/2, 5/8, 3/4, 1, 1 1/4, 1 1/2, 2"	643....		\$729
Hydraulic auger-feeder, Model 6105, field installed, ADD			\$8,268
Hydraulic auger-feeder, Model 6140/7165/8215, field installed, ADD			\$7,745
Discharge extension, 3-foot fixed, 6105	528790		\$583
Discharge extension, 3-foot fixed, 6140	611950		\$808
Discharge extension, 3-foot fixed, 7165	584400		\$761
Discharge extension, 6-foot folding, 7165	584310		\$2,426
Scale display, Weightronix 640XL, with support arm, ADD			\$2,239
Cattlemax mixer, as above, but with 20" or 30" rollermill			CALL

### HAMMER MILLS

	Stock No	Weight	List
26" Portable hammer mill w/pivoting auger, hopper, magnet, screen, 540 PTO, 80-120hp	608030	1600#	\$23,233
26" Portable hammer mill w/pivoting auger, hopper, magnet, screen, 1000 PTO, 80-120hp	607990	1600#	\$23,128
26" Stationary electric hammer mill, auger-out base, hopper, magnet, screen, ADD 40+hp motor	613490	1500#	\$16,549
26" Stationary PTO hammer mill, 1000 PTO drive, auger-out base, hopper, magnet, screen, 80-120hp	613470	1500#	\$19,883
Screen, 26" choose 1/8, 5/32, 3/16, 1/4, 5/16, 3/8, 1/2, 5/8, 3/4, 1, 1 1/4, 1 1/2, 2"			\$729
Motor pulley, 8-groove, for 1 7/8" shaft	410210		\$437
Motor pulley, 8-groove, for 2 1/8" shaft	410220		\$437

**FREIGHT:** Per factory quote from Armstrong, IA; Approx - Mixer-Mill \$2/mile; Hammer Mill \$1500.

**ASSEMBLY:** (estimated): Rollermill 1 hour

**FACTORY WARRANTY:** 1 year on parts, FOB factory; 1 year on local labor, \$40/hour; with limitations

All orders are also subject to the dealer Sales & Security Agreement, our latest Discounts and Terms, and Credit Approval



### TOP SPREAD BALE SHREADERS

	Stock No	Weight	List
664 Top Spread, 5' x 6' table, skid steer mount, hoses & couplers, case drain, 14-pin plug	650500	2100#	\$21,692
864 Top Spread, 5' x 8'4" table, skid steer mount, hoses & couplers, case drain, 14-pin plug	650600	2300#	\$22,397
Universal wire harness, connects 14-pin plug to battery, w/floor control switch, skid steer length Loader mount adapter or mulch screen kit	636080	2.5#	\$546 CALL

### VERTICAL BEATER SPREADERS, Trailed

	Stock No	Weight	List
X350 Single axle, 290 bushel heaped (367 cf), 14.5' box, ADD tires, ADD PTO	9000#	\$41,112	
X350 Tandem axle, 290 bushel heaped (367 cf), 14.5' box, ADD tires, ADD PTO		9000#	\$44,495
X550 Tandem axle, 440 bushel heaped, 551 cf, 19' box, ADD tires, ADD PTO	725550	10600#	\$58,500
X700 Tandem axle, 546 bushel heaped, 683 cf, 18' box, ADD tires, ADD PTO	690701	12200#	\$73,302
X700 Tandem axle, as above, but with scale load cells, ADD tires, ADD PTO	6907101	12200#	\$76,302
X900 Tandem axle, 727 bushel heaped, 909 cf, 20' box, ADD tires, ADD PTO	690901	14750#	\$85,252
X900 Tandem axle, as above, but with scale load cells, ADD tires, ADD PTO	690911	14750#	\$88,252
X900 Truck Mount, ADD drive system	690906		\$44,252
Drive, for 1800 rpm from truck, belt box, double pump (recommended for silage mode)	690925		\$9,879
Drive, for 1000 rpm from truck, belt box, double pump (ok for silage mode, but slower)	690927		\$7,981
Drive, for 1000 rpm from truck, belt box, single pump (not for silage mode)	690926		\$7,981
Tires for X350 single axle, used military tires, set of 2	690628		\$2,486
Tires for X350, single axle, new 660/65R22.5 flotation, set of 2	690629		\$6,071
Tires for X350, tandem axle, used 425/65R22.5 truck tires, set of 4	725726		\$4,500
Tires for X350, tandem axle, new 550/45R22.5 BKT flotation tires, set of 4	725724		\$7,900
Tires for X550, X750, X950 tandem axle, used military tires, set of 4	690620		\$4,972
Tires for X550, X750, X950 tandem axle, new 660/65R22.5 flotation tires, set of 4	690626		\$12,142
PTO for X350, 540 rpm, 1 3/8" 6-spline, constant-velocity CV	638625		\$2,900
PTO for all models, 1000 rpm, 1 3/8" 21-spline, constant-velocity CV	H160105		\$2,900
PTO for all models, 1000 rpm, 1 3/4" 20-spline, constant-velocity CV	H160106		\$2,900
Hardened beater tooth kit, X700, field installed	621250		\$1,654
Hardened beater tooth kit, X900, field installed	H160400		\$2,507
Litter beater paddle kit factory installed	691700		CALL

**FREIGHT:** Per factory quote from Armstrong, IA 50514; Approx- Top Spread \$1.80/mile; Manure Spreaders \$3.00/mile

**ASSEMBLY:** (estimated): Trailed Spreader 2 hrs; Add Scale 2 hrs; Truck Mount Variable Hours, Top Spread 1 hr

**FACTORY WARRANTY:** 1 year on parts, FOB factory; 1 year on local labor, \$40/hour; with limitations

All orders are also subject to the dealer Sales & Security Agreement, our latest Discounts and Terms, and Credit Approval



9016 HD High Dump Cart



Model 2100 Front Unload + Ext + Wagon

### HIGH DUMP CART

	Stock No	Weight	List
9016-HD 2-Wheel Cart, 930 cu foot struck, 40,000# capacity, 9' to 15' dump height, 30.5x32 new tires	671000		\$104,000
9016-HD 2-Wheel Cart, with scale system	671001		\$110,500
Maintenance ladder, for 9016-HD cart	660640		\$666
Flared top extension kit	660679		\$3,423

### FORAGE BOXES

	Stock No	Weight	List
16' Hydraulic rear unload, without roof, without wagon	711610		\$29,079
16' PTO front side unload, without roof, without wagon	711605		\$33,692
16' Hydraulic combo front & rear unload, without roof, without wagon ADD hydraulic drive kit	711600		\$35,775
18' Hydraulic rear unload, without roof, without wagon	711810		\$35,443
18' PTO front side unload, without roof, without wagon	711805		\$35,260
18' Hydraulic combo front & rear unload, without roof, without wagon, ADD hydraulic drive kit	711800		\$37,161
20' Hydraulic rear unload, without roof, without wagon	712010		\$32,371
20' PTO front side unload, without roof, without wagon	712005		\$36,629
20' Hydraulic combo front & rear unload, without roof, without wagon, ADD hydraulic drive kit	702000		\$38,702
24' Hydraulic combo front & rear unload, without roof, ADD wagon, ADD hydraulic drive kit	712400		\$43,719
Hydraulic drive kit, optional for front unload, required for combo front/rear unload	713000		\$8,888
Hydraulic drive kit, manual control, optional for front unload, required for combo front/rear unload	713005		\$7,599
16' Side extensions	711616		\$2,275
18' Side extensions	711816		\$2,010
20' Side extensions	712016		\$2,044
24' Side extensions	712416		\$2,094
16' Roof assembly	711620		\$2,920
18' Roof assembly	711820		\$3,015
20' Roof assembly	712020		\$3,277
Wagon, 12-TON 4-wheel, 8-bolt hubs, 2.25" spindles, EZ-Hitch & Lift, ADD 4 tires	12.10578	954#	\$4,036
Wagon, 15-TON 4-wheel, 8-bolt hubs, 2.75" spindles, EZ-Hitch & Lift, ADD 4 tires	12.10688	1230#	\$6,255
Wagon, 14-TON 6-wheel, 8-bolt hubs, 2.25" spindles, EZ-Hitch & Lift, ADD 4 tires	12.10583	1330#	\$5,382
Wagon, 18-TON 6-wheel, 8-bolt hubs, 2.75" spindles, EZ-Hitch & Lift, ADD 4 tires	12.10689	1654#	\$8,849
Tire, 12.5Lx15 12-ply tubeless, on 15x10 8-bolt wheel, EACH	650540		\$462
Tire, used 425/65R22.5 truck tire, on 22.5 x13 8-bolt wheel, EACH	660555		\$1,145

**FREIGHT:** Forage Box w/Wagon: FOB Armstrong IA; To Utah, So. Idaho \$3,000; To Other Areas \$4,800

**ASSEMBLY:** (estimated): 9015 Dump Box 16 hrs; 9016 Dump Box CALL; Forage Box 3 hrs

**FACTORY WARRANTY:** 1 year on parts, FOB factory; 1 year on local labor, \$40/hour; with limitations

All orders are also subject to the dealer Sales & Security Agreement, our latest Discounts and Terms, and Credit Approval



**MANURE HANDLING EQUIPMENT**



**VACUUM TANKS & SLURRY TANKS**



**AGITATION & INJECTION SYSTEMS**



**FREIGHT:** FOB Mt Lake MN; \$2.50 to \$3.50 per mile, depending on size (wide load). Tanks arrive fully assembled  
**FACTORY WARRANTY:** 1 year on parts (10 Years on tank shell collapse), FOB factory; no labor; w/limitations  
All orders are also subject to the dealer Sales & Security Agreement, our latest Discounts and Terms, and Credit Approval

**PLEASE VISIT BAUMALIGHT.COM FOR EXTENDED LINE AND PRICING**



**MINI SKIDSTEERS- Tracked, Wheeled and Accessories**



**BRUSH MULCHERS**

**BRUSH MULCHERS**



**GENERATORS**

**FREIGHT:** FOB Local Dealer

**FACTORY WARRANTY:** 1 Year on parts and preapproved local labor; with limitations

All orders are also subject to the dealer Sales & Security Agreement, our latest Discounts and Terms, and Credit Approval

**PLEASE VISIT BAUMALIGHT.COM FOR EXTENDED LINE AND PRICING**



**BRUSH CUTTERS**



**STUMP GRINDERS**



**TREE SPADES**



**TREE SHEARS & SAWS**



**BOOM MOWERS**



**TRENCHERS**

**FREIGHT:** FOB Local Dealer

**FACTORY WARRANTY:** 1 Year on parts and preapproved local labor; with limitations

All orders are also subject to the dealer Sales & Security Agreement, our latest Discounts and Terms, and Credit Approval



5710 Fluffer PTO Drive



Adjustable Tine Angle



Hydraulic Reel Lift



5910 PTO Drive

**All Bauman Hay Fluffers have HD 5-bat reels, gentle spring tines, sealed bearings, nylon cam rollers, precision depth adjustment, easy tine angle adjustment, jack stand, new tires**

**Premium Hay Prices- Bauman fluffs hay in place without exposing the lower hay to sun bleaching.**

<b>HAY FLUFFER- PTO Drive, Maximum 350 rpm</b>	<b>Stock No</b>	<b>Weight</b>	<b>List</b>
7-Foot working width, 540 PTO drive, 80 tines, single 15" wheels/tires	5710	925#	\$6,384
7-Foot working width, 540 PTO drive, 80 tines, single 15" wheels/tires, with hydraulic reel lift	5710L	1120#	\$8,538
9-Foot working width, 540 PTO drive, 100 tines, single 15" wheels/tires	5910	985#	\$6,828
9-Foot working width, 540 PTO drive, 100 tines, single 15" wheels/tires, with hydraulic reel lift	5910L	1180#	\$8,984
Tandem axle kit, four 8" wheels/tires Delete or return single wheels/tires, DEDUCT	TANDEM	150#	\$1,250 (\$250)

<b>HAY FLUFFER- Hydraulic Drive, Minimum 6-8 gpm</b>	<b>Stock No</b>	<b>Weight</b>	<b>List</b>
7-Foot working width, hydraulic drive, 80 tines, single 15" wheels/tires	5710H	925#	\$6,384
7-Foot working width, hydraulic drive, 80 tines, single 15" wheels/tires, with hydraulic reel lift	5710HL	1120#	\$8,538
9-Foot working width, hydraulic drive, 100 tines, single 15" wheels/tires	5910H	985#	\$6,828
9-Foot working width, hydraulic drive, 100 tines, single 15" wheels/tires, with hydraulic reel lift	5910HL	1180#	\$8,984
Tandem axle kit, four 8" wheels/tires Delete or return single wheels/tires, DEDUCT	TANDEM	150#	\$1,250 (\$250)

<b>HAY FLUFFER- Ground Drive</b>	<b>Stock No</b>	<b>Weight</b>	<b>List</b>
7-Foot working width, ground drive, single 15" wheels with traction tires ( <i>only 1 available</i> )	5710GD	925#	\$6,198

**FREIGHT:** FOB Wellsville, UT; Delivery-Crated, 1-4 units \$1.25/mile total. Delivery-Assembled, 1-2 units \$1.25/mile total  
**ASSEMBLY:** \$400 each, If shipped, the tongue & PTO will be removed. Allow ½ hr to install. ADD for dealer PDI (will void warranty if not completed)  
**FACTORY WARRANTY:** 1-Year parts and labor; with limitations  
 All orders are also subject to the dealer Sales & Security Agreement, our latest Discounts and Terms, and Credit Approval



**LIGHTWEIGHT BALE ELEVATOR**

	Stock No	Weight	List
20-Foot basic unit (2 10' sections), gearbox drive, electric motor mount, ADD 1/2hp-1hp motor	03700-20B	207#	\$1,912
6-Foot extension	03700-06A	120#	\$394
10-Foot extension	03700-10A	147#	\$628
Undercarriage for 26'-32' elevator, winch, tires, hitch	03700-UCR	350#	\$2,420
Undercarriage for 36'-48' elevator, winch, tires, hitch	03700-UCH	500#	\$2,958
Bale loading chute	03700-026		\$515

**11" SINGLE CHAIN FEED CONVEYOR**

	Stock No	Weight	List
Drive and idle section (2 18" sections), 5.25"x11" trough, rubber flights, 90 fpm, gearbox, ADD motor	02806N		\$1,655
4-Foot extension, galvanized, with chain	02806Nx04A		\$337
5-Foot extension, galvanized, with chain	02806Nx05A		\$365
7-Foot extension, galvanized, with chain	02806Nx07A		\$512
Hopper, galvanized	02806N-HOPPER		\$67
Angled hopper, painted	02806N-BEND		\$687
Discharge spout	02806N-SPOUT		\$188
Trough cover, PER FOOT	02806N-COVER		\$13
Stand with wheels, adjustable height	02806N-UC		\$1,175

**18" DOUBLE-CHAIN FEED CONVEYOR**

	Stock No	Weight	List
Drive and idle section (2 18" sections), 5.25"x18" trough, rubber flights, 90 fpm, gearbox, ADD motor	02807		\$2,017
4-Foot extension, galvanized, with chain	02807x04A		\$656
5-Foot extension, galvanized, with chain	02807x05A		\$797
7-Foot extension, galvanized, with chain	02807x07A		\$974
Hopper, galvanized	02807-HOPPER		\$101
Angled hopper, painted	02807-BEND		\$1,062
Discharge spout	02807-SPOUT		\$366
Trough cover, PER FOOT	02807-COVER		\$19
Stand with wheels, adjustable height	02807-UC		\$1,812

**MOTOR, TECHTOP C-FACE, Single Phase**

Bale elevator 20'-36' use 3/4 hp, over 36' 1 hp.  
27'-39' 1.5hp; over 40' 2hp 3/4 HP \$458;

18" conveyor 3'-19' 3/4 hp, 20'-26' 1 hp  
1 HP \$520; 1.5 HP \$610; 2 HP \$698

**FREIGHT:** Lightweight bale elevators FOB Logan, UT; Others FOB factory, Elmira, ON. Call for delivery price  
**FACTORY WARRANTY:** 1-Year parts and labor; with limitations  
 All orders are also subject to the dealer Sales & Security Agreement, our latest Discounts and Terms, and Credit Approval



**PUSH & PULL SPREADERS**

	Stock No	Weight	List
220 Manual push spreader, 2 cf capacity, 20" spread width, wheel driven	220	90#	\$1,782
430T Trailed spreader, 4 cf capacity, 30" spread width, wheel driven	430T	165#	\$3,928

**UTILITY VEHICLE SPREADER**

	Stock No	Weight	List
440E Spreader, 4 cf capacity, 40" spread width, 12-volt variable-speed drive, ADD mount	440E	325#	\$3,844
440H Spreader, 4 cf capacity, 40" spread width, hydraulic variable-speed drive, hoses, ADD mount	440H	325#	\$3,838
Mount, 3-point hitch	3PT 440		\$639
Mount, Steiner tractor	440		\$474
Mount, Ventrac 4100 tractor	4100		\$541
Mount, Kubota 3990	3990		\$474
Mount, John Deere 1585 TerrainCut	JD1585		\$474
Mount, John Deere Click-N-Go	CHG		\$339
1040SI Slide-in spreader, 10 cf capacity, 40" spread width, 12-volt variable-speed drive	1040SI	300#	\$5,834

**3-POINT HOPPER SPREADER**

	Stock No	Weight	List
640P Spreader, 6.25 cf capacity, 40" spread width, 3-point, PTO drive	640P	315#	\$4,956
640H Spreader, 6.25 cf capacity, 40" spread width, 3-point, hydraulic variable-speed drive, hoses	640H	315#	\$4,956
960H Spreader, 9 cf capacity, 60" spread width, 3-point, hydraulic variable-speed drive, hoses	960H	440#	\$5,397
1140P Spreader, 11cf capacity, 40" spread width, 3-point, PTO drive	1140P	370#	\$5,370
1140H Spreader, 11 cf capacity, 40" spread width, 3-point, hydraulic variable-speed drive, hoses	1140H	370#	\$5,370

**SELF-LOADING BUCKET SPREADER**

	Stock No	Weight	List
1040B Bucket spreader, 10 cf capacity, 40" spread width, hydraulic variable-speed drive, ADD mount	1040B	390#	\$5,531
1560B Bucket spreader, 15 cf capacity, 60" spread width, hydraulic variable-speed drive, ADD mount	1560B	510#	\$6,444
Mount, 3-point hitch, with hydraulic tilt, for 1040B,1560B	3PT-TILT		\$2,410
Mount, skid steer	SSL-B		\$670
Mount, ALO/Global/Euro	ALO		\$670

**OPTIONS**

	Stock No	Weight	List
Hopper extensions, soft cover, hinged lid			CALL
Skid steer mount adapter for 640, 960, 1140	3PT-SSL		\$670

**FREIGHT:** FOB Factory, Elmira ON; Delivery 9% of list price  
**FACTORY WARRANTY:** 1-Year parts and labor; with limitations  
 All orders are also subject to the dealer Sales & Security Agreement, our latest Discounts and Terms, and Credit Approval



**Hydraulic Auger Drives**

	Stock No	Weight	List
LC150 6-15 gpm, 1500 ft lb torque @3000psi, 2" hex shaft, ADD mount,hoses,augers	113130	150#	\$2,185
LC200 10-20 gpm, 2000 ft lb torque @3000psi, 2" hex shaft, ADD mount,hoses,augers	113131	150#	\$2,270
LC300 15-30 gpm, 3000 ft lb torque @3000psi, 2" hex shaft, ADD mount,hoses,augers	113132	150#	\$2,355
LC350 20-35 gpm, 3500 ft lb torque @3000psi, 2" hex shaft, ADD mount,hoses,augers	113133	151#	\$2,490
M200 10-20 gpm, 2000 ft lb torque @3000psi, 2" hex shaft, ADD mount,hoses,augers (2 only 113028)	113028	159#	\$2,560
M300 15-30 gpm, 3000 ft lb torque @3000psi, 2" hex shaft, ADD mount,hoses,augers (1 only 113029)	113029	162#	\$2,725
M350 20-35 gpm, 3500 ft lb torque @3000psi, 2" hex shaft, ADD mount,hoses,augers (1 only 113030)	113030	192#	\$2,995
H200 same specs as M200, but with bolted 2" hex shaft for fast in-field replacement	113001	183#	\$3,145
H300 same specs as M300, but with bolted 2" hex shaft for fast in-field replacement (1 only 113014)	113014	185#	\$3,285
H350 same specs as M350, but with bolted 2" hex shaft for fast in-field replacement (1 only 113016)	113016	216#	\$3,425
Replacement 2" hex output shaft, H-Series (lifetime warranty)	113300		\$260

**High Torque, Low-Speed Drives, for Faster Rock Drilling**

	Stock No	Weight	List
HTLS-6K 6-15 gpm, 6000 ft lb torque @3000psi, 9-23 rpm, 2" hex shaft, ADD mount,hoses, bits	113078	232#	\$4,540
HTLS-7K 10-25 gpm, 6650 ft lb torque @3000psi, 14-28 rpm, 2.5" hex shaft, ADD mount,hoses, bits	113082	236#	\$4,815
HTLS-10K 15-30 gpm, 10000 ft lb torque @3000psi, 13-26 rpm, 2.5" hex shaft, ADD mount,hoses, bits	113077	299#	\$5,530

**Mounts & Hoses**

	Stock No	Weight	List
Skid steer mount, quick-attach, drive swivel centered	QT100	150#	\$610
Skid steer hose kit, 1/2"x96", flat faced couplers, for LC,M,H,HTLS drives	111385		\$307
Skid steer mount, WEIGHTED, for rock drilling, for 1800 lb capacity loaders (1 only at 30% discount)	QT1400	1400#	\$5,425
Skid steer mount, WEIGHTED, for rock drilling, for 2300 lb capacity loaders	QT1900	1900#	\$7,190
Skid steer mount, WEIGHTED, for rock drilling, for 2800 lb capacity loaders	QT2400	2400#	\$8,955
Bucket mount, bolt-on to bucket lip or loader arm, drilling required	LB410	46#	\$405
Loader mount, skid steer quick-attach, drive swivel offset to right	QT101	150#	\$610
Loader mount, Alo/Euro/Global quick-attach, drive swivel offset to right	QT103	150#	\$745
Mini-skid steer mount, quick-attach	QT200	60#	\$425
Universal blank mount, ADD excavator or loader mount	QH-100		\$445

**FREIGHT:** FOB Belton, TX; Freight to NW States \$400 or \$160 single auger \*Free delivery on orders over \$8,000 list price, including augers  
**FACTORY WARRANTY,** on parts, with limitations: NC 3 years, M 4 years, H 5 years, HD 4 years.  
 All orders are also subject to the dealer Sales & Security Agreement, our latest Discounts and Terms, and Credit Approval



Coupler types: A=2" Round; B=2 9/16" Round, 7/8" Hole; C=2" Hex; D= 2 9/16" Round, 1/2" Hole

DCA Medium Dirt Augers	Stock No	Weight	List
------------------------	----------	--------	------

*For dirt & fractured rock, cast head, bolt-on teeth, semi-double*

6" x 48" DCA, 2" hex	<b>A06061C</b>		\$380
9" x 48" DCA, 2" hex	<b>A09061C</b>		\$525
12" x 48" DCA, 2" hex	<b>A12061C</b>		\$590
15" x 48" DCA, 2" hex	A15061C		\$780
18" x 48" DCA, 2" hex	A18061C		\$855
24" x 48" DCA, 2" hex	A24061C		\$995

DCA w/Double Flight	Stock No	Weight	List
---------------------	----------	--------	------

9" x 48" DCA, 2" hex	A09060C		\$545
12" x 48" DCA, 2" hex	A12060C		\$625
15" x 48" DCA, 2" hex	A15060C		\$845
18" x 48" DCA, 2" hex	A18060C		\$1,000
24" x 48" DCA, 2" hex	A24060C		\$1,230
30" x 48" DCA, 2" hex	A30060C		\$1,670
36" x 48" DCA, 2" hex	A36060C		\$2,015

SDA HD Dirt Augers	Stock No	Weight	List
--------------------	----------	--------	------

*For dirt & fractured rock, cast head, knock-on teeth, double cut, 3/8" shallow pitch single flight to carry more soil*

6" x 48" SDA, 2" hex	<b>A06031C</b>	55#	\$500
8" x 48" SDA, 2" hex	A08031C	74#	\$555
9" x 48" SDA, 2" hex	<b>A09031C</b>	85#	\$560
10" x 48" SDA, 2" hex	A10031C	92#	\$630
12" x 48" SDA, 2" hex	<b>A12031C</b>	96#	\$655
15" x 48" SDA, 2" hex	A15031C	127#	\$850
4.5" to 36" diameter, 54" length, carbide teeth			Call

SDA w/Double Flight	Stock No	Weight	List
---------------------	----------	--------	------

8" x 48" RSA, 2" hex	A08011C	70#	\$745
9" x 48" RSA, 2" hex	A09011C	81#	\$760
10" x 48" RSA, 2" hex	A10011C	88#	\$805
12" x 48" RSA, 2" hex	A12011C	92#	\$830
15" x 48" RSA, 2" hex	A15011C	99#	\$1020
18" to 36" diameter, 54" length, carbide teeth			Call

PUFF T-Post Bit	Stock No	Weight	List
-----------------	----------	--------	------

2" x 48" rock PUFF, 2" hex	<b>A02005C</b>		\$545
----------------------------	----------------	--	-------

Bullet Tooth Rock Bits	Stock No	Weight	List
------------------------	----------	--------	------

4.5" x 48" SRA, 2" hex	<b>A04518C</b>	60#	\$1,060
6" x 48" SRA, 2" hex	A06018C	53#	\$1,185
8" x 48" RAD, 2" hex	A08008C	90#	\$1,730
9" x 48" RAD, 2" hex	<b>A09008C</b>	102#	\$1,750
10" x 48" RAD, 2" hex	A10008C	105#	\$1,860
12" x 48" RAD, 2" hex	<b>A12008C</b>	107#	\$2,155
15" x 48" RAD, 2" hex	A15008C	140#	\$2,765
18" x 48" RAD, 2" hex	A18008C	201#	\$2,885
24" x 48" RAD, 2" hex	A24008C	291#	\$3,570

Spiral rock bits Call  
Double Bullet use \*0096

OPTIONS	Stock No	Weight	List
---------	----------	--------	------

Adapter, 2" hex, 2" rnd male	<b>AH200R200</b>		\$245
Adapter, 2" hex, 2.5" rnd male	<b>AH200R250</b>		\$275
Adapter, 2" hex, 2.5", 1/2" hole	<b>AH200R250D</b>		\$265
Adapter, 2" rnd, 2 hex male	<b>AR200H200</b>		\$225
Adapter, 2.5" rnd, 2 hex male	<b>AR256H200</b>		\$240
Extension, 2" hex, 24" fixed	EH200024F		\$265
Extension, 2" hex, 36" fixed	<b>EH200036F</b>		\$330
Extension, 2" hex, 48" fixed	EH200048F		\$395
Extension, 2" hex, 60" fixed	EH200060F		\$470
Extension, 2" hex, 72" variable	<b>EH200072</b>		\$505

**40% discount on teeth for 50 of one item**

Tooth, for DCA bolt-on	112087		CALL
Pilot, for DCA	112250		CALL
Tooth, for SDA/RSA flat	112008		CALL
Tooth, for SDA/RSA spike	112010		CALL
Pilot, for SDA/RSA	112252		CALL
Tooth, C1HD for bullet auger	115185		CALL
Pilot, for bullet auger	115052		CALL
Pilot, for Puff bit	112018		CALL

**BOLD ITEMS IN STOCK AT ELLIS EQUIPMENT IN WELLSVILLE**

**FREIGHT:** Items in bold are FOB Wellsville, UT, others are FOB Belton, TX. Volume order programs available.


**FACTORY WARRANTY:** 1 Year on parts for ag use, 90 days for commercial use, with limitations


All orders are also subject to the dealer Sales & Security Agreement, our latest Discounts and Terms, and Credit Approval






TM48 3-Point Rock Drill	Stock No	Weight	List
TM48 Drilling Machine, 2" square shaft, ADD 36" bits, SPECIFY Cat 1, 2 or 3 hitch	TM48	1100#	\$8,145
TM48L Drilling Machine, with leveling cylinders, 2" square shaft, ADD 36" bits, SPECIFY Cat 1, 2 or 3	TM48GRS	1100#	\$9,260
Cat 2 hitch spacer kit	100320		\$208

HD Dirt Augers	Stock No	Weight	List
	6" x 36" SSA, 2" square	A06010	42# \$1,045
	8" x 36" SSA, 2" square	A08010	60# \$1,140
	9" x 36" SSA, 2" square	A09010	67# \$1,175
	10" x 36" SSA, 2" square	A10010	71# \$1,185
	12" x 36" SSA, 2" square	A12010	83# \$1,350
	15" x 36" SSA, 2" square	A15010	92# \$1,590
	18" x 36" SSA, 2" square	A18010	148# \$1,810

Rock Bits	Stock No	Weight	List
	2" x 36" PUFF, 2" square, for T-posts	A02005	\$490
	6" x 36" SRA, 2" square	A06016	47# \$1,180
	9" x 36" SRA, 2" square	A09016	65# \$1,365

Rock and Dirt Bits	Stock No	Weight	List
	8" x 36" RAD, 2" square	A08006	78# \$1,695
	9" x 36" RAD, 2" square	A09006	81# \$1,700
	10" x 36" RAD, 2" square	A10006	92# \$1,715
	12" x 36" RAD, 2" square	A12006	95# \$2,060
	15" x 36" RAD, 2" square	A15006	125# \$2,290
	18" x 36" RAD, 2" square	A18006	247# \$2,745
	Bits with double-row bullets, 12", 15", 18"		Add 8%
	Bits with spiral teeth, 6" to 36"	A***040	Call

**FREIGHT:** Factory to dealer, \$480 for drive and all augers and parts shipping together.  
**FACTORY WARRANTY:** 1 Year on parts for ag use, 90 days for commercial use, with limitations.  
 All orders are also subject to the dealer Sales & Security Agreement, our latest Discounts and Terms, and Credit Approval



740-T

740

740-T PLUS



740-T PLUS



740

**ALL-HYDRAULIC post drivers - no lift cables, no springs, no manual adjustment cranks**  
**Heavier hammers and more counterweight, for stability and speed**

**POST DRIVERS, Mounted or Loader**

**Stock No Weight List**

740 Driver, 740# centered hammer, up to 11'6", hydr 4-way tilt, hydr post hugger, ADD mount	740	1697#	\$9,870
Mount, 3-Point Hitch	BJ3PH	30#	\$231
Mount, Skid Steer	BJQT	150#	\$723
Mount, Skid Steer, with 8" side shift	BJSSQT	420#	\$2,438
Square/Round post hugger, in lieu of standard round post hugger	BJSRPH	35#	\$190

**POST DRIVERS, Trailed**

**Stock No Weight List**

740-T Driver, 740# offset hammer, 11'6" max height, 13hp Honda engine, 16" side shift, 16" fore-aft shift, 4-way mast tilt, hydr post hugger, 15-gallon oil reservoir, post rack, counterweight, tires	740-T	3748#	\$17,427
740-T PLUS Driver, as 740-T, but adds 13'6" max height with 24" hydr vertical mast shift, 24" fore-aft shift, toolbox, hydr stabilizer arm	740-T PLUS	4440#	\$20,046
Square/Round post hugger, in lieu of standard round post hugger	BJSRPH	35#	\$190

**S-TINE CULTIVATOR, Trailed**

**Stock No Weight List**

7-Foot, 21 tines on 4" centers, 2.75" sweeps, clevis hitch, hydraulic lift, 7.60-15 tires, jack	BJSTC7-4	1055#	\$5,650
2-Foot extension for 9' width, 6 tines on 4" centers, 2.75" sweeps	BJEXT2-4	140#	\$705
4-Foot extension for 11' width, 12 tines on 4" centers, 2.75" sweeps	BJEXT4-4	336#	\$1,378
7-Foot, 15 tines on 6" centers, 2.75" sweeps, clevis hitch, hydraulic lift, 7.60-15 tires, jack	BJSTC7-6	973#	\$5,197
2-Foot extension for 9' width, 4 tines on 6" centers, 2.75" sweeps	BJEXT2-6	95#	\$566
4-Foot extension for 11' width, 8 tines on 6" centers, 2.75" sweeps	BJEXT4-6	275#	\$1,182
Rear basket or tine harrows available			CALL

**FREIGHT:** Model 740- \$1250 delivery to the dealer; Model 740-T - \$1,500 to Logan UT plus \$1.50/mile for delivery

**FACTORY WARRANTY:** 1 Year on pre-approved parts and labor; with limitations.

All orders are also subject to the dealer Sales & Security Agreement, our latest Discounts and Terms, and Credit Approval



Park or Single Drum Roller + Transport



Folding Roller

**MUNICIPAL PARK ROLLERS**

	Stock No	Weight	List
7-Foot park roller	BJDR7	1637#	\$3,935
8-Foot park roller	BJDR8	1780#	\$4,223
Transport kit, single wheel, hydraulic lift w/hoses, jack, 15" wheels, ADD 2 tires	BJ333		\$1,923
Transport kit, dual wheel, hydraulic lift w/hoses, jack, 15" wheels, ADD 4 tires	BJ333-D		\$2,346
Light kit	BJLK		\$462
Swivel hitch	BJSH		\$167
Tire, 9.5L15 8-ply, EACH, NET	TC0325		\$125
Tire, 31x10.5R15LT truck tire, EACH, NET	TC0338		\$151

**SINGLE DRUM ROLLERS**

	Stock No	Weight	List
9'6" Coverage	BJDR09	2213#	\$4,628
10'6" Coverage	BJDR10	2362#	\$4,950
11'6" Coverage	BJDR11	2511#	\$5,268
12'6" Coverage	BJDR12	2660#	\$5,589
13'6" Coverage	BJDR13	2809#	\$5,909
14'6" Coverage	BJDR14	2958#	\$6,227
15'6" Coverage	BJDR15	3107#	\$6,547
16'6" Coverage	BJDR16	3256#	\$6,867
Transport kit, single wheel, hydraulic lift w/hoses, jack, 15" wheels, 9.5L15 tires	BJDR332	390#	\$2,832
Transport kit, dual wheel, hydraulic lift w/hoses, jack, 15" wheels, 9.5L15 tires	BJDR332-D	470#	\$3,814
Light kit	BJLK		\$498

**FOLDING ROLLERS - Trailed**

	Stock No	Weight	List
20'6" Coverage, transport 12' wide 9'6" high, hydr fold, hydr lift, scrapers, 11L15 tires, road lights	BJDR20	6602#	\$24,224
23'6" Coverage, transport 12' wide 11' high, hydr fold, hydr lift, scrapers, 11L15 tires, road lights	BJDR23	7064#	\$25,162
25'6" Coverage, transport 12' wide 12' high, hydr fold, hydr lift, scrapers, 11L15 tires, road lights	BJDR25	7672#	\$25,790
26'6" Coverage, transport 14' wide 11'6" high, hydr fold, hydr lift, scrapers, 11L15 tires, road lights	BJDR26	7826#	\$26,104
28'6" Coverage, transport 14' wide 12'6" high, hydr fold, hydr lift, scrapers, 11L15 tires, road lights	BJDR28	8134#	\$26,732
30'6" Coverage, transport 14' wide 13'6" high, hydr fold, hydr lift, scrapers, 11L15 tires, road lights	BJDR30	8442#	\$27,357
32'6" Coverage, transport 16' wide 13'6" high, hydr fold, hydr lift, scrapers, 11L15 tires, road lights	BJDR32	8750#	\$27,881
34'6" Coverage, transport 16' wide 14'6" high, hydr fold, hydr lift, scrapers, 11L15 tires, road lights	BJDR34	9058#	\$29,518

**FREIGHT:** Model 740- \$1250 delivery to the dealer; Model 740-T - \$1,500 to Logan UT plus \$1.50/mile for delivery

**FACTORY WARRANTY:** 1 Year on pre-approved parts and labor; with limitations.

All orders are also subject to the dealer Sales & Security Agreement, our latest Discounts and Terms, and Credit Approval



### REAR BLADES, Manual Adjust

	Stock No	Weight	List
6' COMPACT, Cat I, pinset angle, bolted tilt/offset, 13" blade, 1" pin, 6" edge, 15-35 hp	NVHF-182	280#	\$1,005
7' COMPACT, Cat I, pinset angle, bolted tilt/offset, 13" blade, 1" pin, 6" edge, 15-35 hp	NVHF-212	320#	\$1,072
7' STANDARD, Cat I, pinset angle/tilt, bolted offset, 17" blade, 3" pin, 6" edge, 30-55 hp	NVH-210T	447#	\$1,520

### REAR BLADES, Manual Adjust with Hydraulic Options

	Stock No	Weight	List
6' UTILITY, Cat I, pinset or hydr angle, bolted offset/tilt, 16" blade, 2 5/8" pin, 6" edge, 30-55 hp	NVHA-180	345#	\$1,304
7' UTILITY, Cat I, pinset or hydr angle, bolted offset/tilt, 16" blade, 2 5/8" pin, 6" edge, 30-55 hp	NVHA-210	370#	\$1,399
8' UTILITY, Cat I, pinset or hydr angle, bolted offset/tilt, 16" blade, 2 5/8" pin, 6" edge, 30-55hp	NVHA-240	400#	\$1,483
Hydraulic Angle kit, 2.5"x12" cylinder, 8' hoses & couplers, for NHVA blades	KHCN101	35#	\$399
6' MEDIUM, Cat II, mechanical link angle/tilt/offset, 17" blade, 3" pin, 6" edge, 50-80 hp	NB80-180	780#	\$2,561
7' MEDIUM, Cat II, mechanical link angle/tilt/offset, 17" blade, 3" pin, 6" edge, 50-80 hp	NB80-210	815#	\$2,681
8' MEDIUM, Cat II, mechanical link angle/tilt/offset, 17" blade, 3" pin, 6" edge, 50-80 hp	NB80-240	850#	\$2,810
8' HEAVY, Cat II, mechanical link angle/tilt/offset, 18" blade, 3" pin, 6" edge, 80-120 hp	NB120-240	1025#	\$3,621
9' HEAVY, Cat II, mechanical link angle/tilt/offset, 18" blade, 3" pin, 6" edge, 80-120 hp	NB120-270	1080#	\$3,787
10' HEAVY, Cat II, mechanical link angle/tilt/offset, 18" blade, 3" pin, 6" edge, 80-120 hp	NB120-300	1125#	\$3,960
Hydraulic Angle kit, 3"x12" cylinder, 8' hoses & couplers, for NB80 or NB120 blades	KHCN102		\$266
Hydraulic Tilt kit, 3"x8" cylinder, 12' hoses & couplers, for NB80 or NB120 blades	KHCN105		\$258
Hydraulic Offset kit, 3"x8" cylinder, 8' hoses & couplers, for NB80 or NB120 blades	KHCN106		\$250
9' X-HEAVY, Cat II-III, 19" blade, 4" pin, 90-150 hp, 3 mechanical links	NVHL-270XHD	1501#	\$5,651
10' X-HEAVY, Cat II-III, 19" blade, 4" pin, 90-150 hp, 3 mechanical links	NVHL-300XHD	1550#	\$5,826
Hydraulic Angle or Offset kit, 4"x16" cylinder, 8' hoses, exch for mech link, for NVHL, EACH	KHCN103+		\$450
Hydraulic Tilt kit, 3"x4.5" cylinder, 12' hoses, exch for mech link, for NVHL blades	KHCN104+		\$305

### REAR BLADE OPTIONS

	Stock No	Weight	List
Skid shoes, for NVHF-series, set of 2	C6100004		\$64
Skid shoes, for NVH-T series, set of 2	C6100001		\$112
Skid shoes, for NHVA-series, set of 2	KMCN022		\$68
Skid shoes, for NB-series, set of 2	C6100002		\$106
Skid shoes, for NVHL blades, set of 2	C6100003	13#	\$52
End plates, for NVHF series, set of 2	C6200002		\$75
End plates, for NVH-T series, set of 2	C6200001		\$180
End plates, for NHVA-series, set of 2	KMCN021		\$104
End plates, for NB-series, set of 2	C6200003	58#	\$205
End plates, for NVHL blades, set of 2	C6200004	62#	\$235
Tailwheel, mechanical link adjustment, bolt-on, for NVHL (for hydr kit add \$418)	C6600001+M		\$1,053

**FREIGHT:** FOB Wellsville, UT; Delivery 8% of list price, or FREE DELIVERY for 5 Blades.

**FACTORY WARRANTY:** 1 Year on pre-approved parts and labor; with limitations.

All orders are also subject to the dealer Sales & Security Agreement, our latest Discounts and Terms, and Credit Approval



**ROLLOVER PLOW**

	Stock No	Weight	List
2-Bottom rollover plow, Cat 2 hitch, 14"-16" furrow width, 32" x 33" high clearance, 60-90 hp	AVB-200H		\$6,988
3-Bottom rollover plow, Cat 2 hitch, 14"-16" furrow width, 32" x 33" high clearance, 90-120 hp	AVB-300H	1454#	\$9,418
4-Bottom rollover plow, Cat 2-3 hitch, 14"-16" furrow width, 32" x 33" high clearance, 120-150hp	AVB-400H	2269#	\$12,546

**SUBSOIL RIPPER**

	Stock No	Weight	List
3-Shank V-ripper, Cat 2-3 hitch, adjustable spacing up to 30", shear bolt, 75-100 hp	SB-5/3	970#	\$3,538
5-Shank V-ripper, Cat 2-3 hitch, adjustable spacing up to 30", shear bolt, 100-125 hp	SB-7/5	1370#	\$5,764
Extra shank assembly, EACH	SB-Shank		\$640

**DITCHING/DIKING**

	Stock No	Weight	List
V-Ditcher, 7-foot, Cat 2 hitch, rigid, up to 120 hp	CZB-200	771#	\$3,311
Border/Levee Disc, Cat 2 hitch, 26"x.25" discs, adjustable width, vertical & horizontal angle, 80+ hp	BOB-06	1016#	\$4,213
Bed Shaper, Cat 2 hitch, adjusts to make a bed 4" to 12" High and 28" to 48" wide for 70 hp+	TF-3248	992#	\$4,295

**3-POINT OFFSET DISC**

	Stock No	Weight	List
6' Disc, 16 blades 22" x 5/32" notched/solid, triple ball bearings, 4"x3" frame, Cat II hitch, 50+ hp	RIB-1622	948#	\$3,724
7'6" Disc, 20 blades 22" x 5/32" notched/solid, triple ball bearings, 4"x3" frame, Cat II hitch, 70+ hp	RIB-2022	1080#	\$4,190
Scrapers, for RIB discs, ADD per disc		9#	\$33

**RT TRAILED OFFSET DISC, 6"x4" Frame,**

	Stock No	Weight	List
8' Disc, 22 24"x.25" discs, 9" spacing, greased bearings, scrapers, two 7.5L16 tires, 80+ hp	RT+1-2224	3362#	\$12,028
9'6" Disc, 26 24"x.25" discs, 9" spacing, greased bearings, scrapers, two 7.5L16 tires, 100+ hp	RT+1-2624	3500#	\$13,993
10'6" Disc, 28 24"x.25" discs, 9" spacing, greased bearings, scrapers, two 7.5L16 tires, 100+ hp	RT+1-2824	3913#	\$14,463
12' Disc, 32 24"x.25" discs, 9" spacing, greased bearings, scrapers, two 7.5L16 tires, 120+ hp	RT+1-3224	4090#	\$15,429
12' Disc, 28 26"x.25" discs, 10.5" spacing, oil bath bearings, scrapers, two 9.5L15 tires, 140+ hp	RT+4-2826	4970#	\$21,525
13'8" Disc, 32 26"x.25" discs, 10.5" spacing, oil bath bearings, scrapers, two 9.5L15 tires, 150+ hp	RT+4-3226	5340#	\$22,934

**FREIGHT:** FOB Wellsville, UT; Delivery 8% of list price  
**ASSEMBLY:** Plow is assembled; SB subsoiler \$200; RIB disc \$250; RT disc \$400  
**FACTORY WARRANTY:** 1 Year on pre-approved parts and labor; with limitations.  
 All orders are also subject to the dealer Sales & Security Agreement, our latest Discounts and Terms, and Credit Approval



RTB-100XG Tiller



RTB-205YC Tiller



RTB-235XU Tiller



RTB-310C Tiller

**PTO TILLERS**

3.5-Foot Compact Tiller (40"), For 15-30 hp  
 4-Foot Compact Tiller (50"), For 15-30 hp  
 5-Foot Compact Tiller (60"), For 18-30 hp

6-Foot Utility Tiller (74"), For 40-60 hp  
 7-Foot Utility Tiller (82"), For 45-60 hp

8-Foot Medium Tiller (93"), 54 blades, for 70-80 hp

10-Foot Heavy Tiller (122"), 4-speed gearbox, 84 blades, for 90-130 hp

	Stock No	Weight	List
RTB-100XG	450#	\$2,110	
RTB-122XG	380#	\$2,194	
RTB-145XG	410#	\$2,299	
RTB-185YC	640#	\$3,214	
RTB-205YC	700#	\$3,602	
RTB-235XU	1250#	\$7,077	
RTB-310C	2100#	\$11,834	

**SKID STEER TILLERS**

66" Tiller, 40 tines on spiral rotor, 2-motor direct bidirectional drive, for 14-23 gpm @2500 psi  
 71" Tiller, 44 tines on spiral rotor, 2-motor direct bidirectional drive, for 16-28 gpm @2500 psi  
 78" Tiller, 48 tines on spiral rotor, 2-motor direct bidirectional drive, for 22-41 gpm @3000 psi  
 84" Tiller, 52 tines on spiral rotor, 2-motor direct bidirectional drive, for 28-45 gpm @3500 psi

	Stock No	Weight	List
SST165	680#	\$6,780	
SST180	710#	\$6,933	
SST195	745#	\$7,052	
SST210	780#	\$7,189	

**CONSTRUCTION BOX SCRAPER, Hydraulic Shanks**

7' Box Scraper, construction-duty, 8 HD shanks w/hydr lift, Cat II hitch, ADD hoses

	Stock No	Weight	List
BB210	1400#	\$5,127	

**FEED HAMMER MILL**

Hammer Mill, 20", trailed, double bagger discharge, 540 PTO, tires, two screens, 30-60hp

Hammer Mill, 20", 3-point hitch, double bagger discharge, 540 PTO, two screens, 30-60hp

Extra screen for MMRB, 1/8", 5/32", 3/16", 1/4", 5/16", 3/8", 1/2", 5/8", 3/4", 1", EACH

	Stock No	Weight	List
MMRB-20	1100#	\$4,434	
MMIB-20	1050#	\$4,839	
TA4016-xx-10		\$120	

BB210 Scraper



MMIB-20 Mill



MMRB-20 Mill



**FREIGHT:** FOB Wellsville, UT; Delivery 7% of list price.

**FACTORY WARRANTY:** 1 Year on pre-approved parts and labor; with limitations.

All orders are also subject to the dealer Sales & Security Agreement, our latest Discounts and Terms, and Credit Approval



418 8-Footer Cutter



672HD 6' Cutter



TCF Tree Cutter, Fold-up Rear Deck

## “410” ROUND BACK CUTTERS

All models - 3/16" round back deck, 130hp gearbox, slip clutch, Cat II hitch, 1/2"x4" blades, stump jumper, laminated tire, 2"-12" cut height, rubber deflector, 2" capacity, overall width 6" wider than cut width

	Stock No	Weight	List
5' Round Back, #5 540 PTO, 12,717 fpm, Cat II hitch, 2" capacity, 30+ hp	415	900#	\$4,000
6' Round Back, #5 540 PTO, 15,260 fpm, Cat II hitch, 2" capacity, 40+ hp	416	1060#	\$4,715
7' Round Back, #6 540 PTO, 17,803 fpm, Cat II hitch, 2" capacity, 50+ hp	417	1375#	\$6,685
8' Round Back, #6 540 PTO, 16,324 fpm, Cat II/III quick hitch compatible, 2" capacity, 80+ hp	418	2096#	\$7,795
Dual tail wheel (standard on 417 & 418), ADD	xxxD		\$525
1000 rpm PTO, Model 415, 416, 416 only, NO CHARGE	-1		N/C
Front chain guards, ADD			\$359

## “600” XHD ROTARY CUTTERS

6' HD, 1/4" deck, 145hp gearbox (2 13/16"), 540 PTO, slip clutch, Cat II, 5/8"x6" blades, 1 1/4" blade bar, laminated tire, 2-12" height, 15,260 fpm speed, chain curtain, 4" capacity

	Stock No	Weight	List
6' HD, 1/4" deck, 145hp gearbox (2 13/16"), 540 PTO, slip clutch, Cat II, 5/8"x6" blades, 1 1/4" blade bar, laminated tire, 2-12" height, 15,260 fpm speed, chain curtain, 4" capacity	672HD	1720#	\$10,206
7' HD, 1/4" deck, 145hp gearbox (2 13/16"), 540 PTO, slip clutch, Cat II, 5/8"x6" blades, 1" blade bar, laminated tire, 2-12" height, 17,803 fpm speed, chain curtain, dual wheels	684	2200#	\$11,470
Dual tail wheel (standard on 684), ADD	xxxD		\$368
1000 rpm PTO, 672HD and 684HD, NO CHARGE			N/C

## ROTARY TREE CUTTERS

5' Open Back, 540 PTO, 165 hp gearbox, slip clutch, Cat II, for 60-100 hp, 6" capacity  
5' Open Back, 1000 PTO, 165 hp gearbox, slip clutch, Cat II, for 60-100 hp, 6" capacity

	Stock No	Weight	List
5' Open Back, 540 PTO, 165 hp gearbox, slip clutch, Cat II, for 60-100 hp, 6" capacity	TCO-2525C	1695#	\$11,620
5' Open Back, 1000 PTO, 165 hp gearbox, slip clutch, Cat II, for 60-100 hp, 6" capacity	TCO-2520C	1695#	\$11,620
6' Open Back, 540 PTO, 165 hp gearbox, slip clutch, Cat II, for 70-100 hp, 8" capacity	TCO-2625C	2455#	\$13,700
6' Open Back, 1000 PTO, 240 hp gearbox, slip clutch, Cat II, for 70-100 hp, 8" capacity	TCO-2620C	2455#	\$13,700
6' Closed Back, 540 PTO, 165 hp gearbox, slip clutch, Cat II, for 80-110 hp, 8" capacity	TCR-2625C	2600#	\$13,975
6' Closed Back, 1000 PTO, 240 hp gearbox, slip clutch, Cat II, for 80-110 hp, 8" capacity	TCR-2620C	2600#	\$13,975
6' Fold-Up Back, 540 PTO, 165 hp gearbox, slip clutch, Cat II, for 80-110 hp, 8" capacity	TCF-2625	2710#	\$15,315
6' Fold-Up Back, 1000 PTO, 240 hp gearbox, slip clutch, Cat II, for 80-110 hp, 8" capacity	TCF-2620	2710#	\$15,315
Mechanical clutch, rather than slip clutch, TCO-2620C, TCF-2620, TCR-2620C, ADD		2710#	\$672

**FREIGHT:** 1 Unit: FOB Ozark, AL; Call for freight estimate.

**FACTORY WARRANTY:** Preapproval required. Parts only, 90 days, FOB factory, with limitations

All orders are also subject to the dealer Sales & Security Agreement, our latest Discounts and Terms, and Credit Approval

**PRO SERIES ATV SPRAYERS 14-200 GALLON**



**FIELD & 3-POINT SPRAYERS**



**TRACTOR MOUNTED FERTILIZER TANKS**



**FREIGHT:** FOB Factory: to Wellsville, UT - harvester \$2450, hay head \$950, corn head \$950; Add \$1.50/mile for delivery  
**FACTORY WARRANTY:** 1 Year, with limitations. Labor must be pre-approved.  
All orders are also subject to the dealer Sales & Security Agreement, our latest Discounts and Terms, and Credit Approval



**GRAIN CARTS & WAGONS**



**COMBINE HEADER TRANSPORT TRAILERS**



**COMBINE TANK AND AUGER EXTENSIONS**



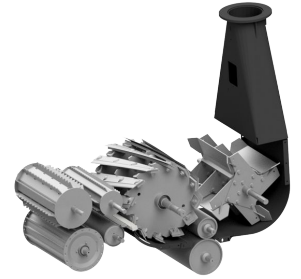
**FREIGHT:** FOB Factory: to Wellsville, UT - harvester \$2450, hay head \$950, corn head \$950; Add \$1.50/mile for delivery  
**FACTORY WARRANTY:** 1 Year, with limitations. Labor must be pre-approved.  
All orders are also subject to the dealer Sales & Security Agreement, our latest Discounts and Terms, and Credit Approval



Model 300 w/Folding Stinger Spout & Tank



Model 300 with Standard Spout



Straight-Thru Crop Flow

**SCORPION HARVESTER**

**Stock No Weight List**

300 Harvester, standard spout, Kernel Processor, Metal Alert, 8-blade cylinder, up to 300 hp	7200#	\$111,190
300 Harvester, standard spout, Kernel Processor, Metal Alert, 12-blade cylinder, up to 300 hp	7200#	\$113,385
350 Harvester, standard spout, Kernel Processor, Metal Alert, ISOBUS, 8-blade cylinder, up to 350 hp		CALL
350 Harvester, standard spout, Kernel Processor, Metal Alert, ISOBUS, 12-blade cylinder, up to 350 hp		CALL
Optional Stinger long folding spout, suspension, LED spotlight, WIFI camera, factory installed, ADD		\$7,995
Optional Stinger long folding spout, suspension, LED spotlight, WIFI camera, field installed, ADD		\$9,145
Delete Kernel Processor, DEDUCT		(\$9,275)
Choose cylinder speed (300 only): 1033 rpm for 1000 PTO (standard), 824 for 1000 PTO		N/C
Choose PTO: 1000 rpm 1 3/4" 20-spline (standard), 1000 1 3/8" 21-spline		N/C
Choose hitch: 1.6" clevis (standard), 1.2" clevis, 1.6" flat, 2" flat		N/C
Choose cut length range (Model 300): 8-blade, 3/8"-1/2"-3/4" or 1/2"-3/4"-1", at factory		N/C
Choose cut length range (Model 300): 12-blade, 1/4"-3/8"-1/2" or 5/16"-1/2"-5/8", at factory		N/C
Change cut length range (Model 300), field installed		\$1,530
Choose axles & tires:		
Tandem axles, 31x13.50 Terra Rib tires (standard)		N/C
Tandem axles, 31x15.50 Terra Trac tires, ADD		\$3,020
Single axle, 31x13.50 Terra Rib tires (Model 300 only, not for 4-row cornhead), DEDUCT		(\$1,700)
Single axle, 31x15.50 Terra Trac tires (Model 300 only, not for 4-row cornhead), DEDUCT		(\$1,100)
Choose tractor drawbar extension if needed to get 20"-24" from PTO to PIN (John Deere Model Tractors		
6" Tractor drawbar extension, Cat III/IV, to help align PTO driveline	K2770-6	\$765
8" Tractor drawbar extension, Cat III/IV, to help align PTO driveline	K2770-8	\$765

**HARVESTER OPTIONS**

**Stock No Weight List**

Wireless update/service kit, Model 300 only - FREE with first Model 300 sold	K31505	\$900
ISOBUS joystick and monitor, for tractors without them (Model 350)		Call
Kernel Processor kit, field installed, ADD 8 hours labor)	K31281	\$15,815
18" Vertical spout extension, for standard spout	K31274	\$1,185
Rear spotlight kit for spout (standard with Stinger)	K32788	\$295
Wifi camera kit, 7" color monitor (standard with Stinger)	K31673	\$875
Battery cable with quick connector (300 only)	K31205	\$300
Friction clutch kit for feed roller drive (for very quick-start tractor PTO's)	K32014	\$2,550
Water tank kit, 50 gallons, pump, filters, nozzle, electric control	K21275	\$2,950
Additional water tank, adds 50 gallons	K29276	\$1,930

**FREIGHT:** FOB Factory: to Wellsville, UT - harvester \$2450, hay head \$950, corn head \$950; Add \$1.50/mile for delivery  
**FACTORY WARRANTY:** 1 Year, with limitations. Labor must be pre-approved.  
 All orders are also subject to the dealer Sales & Security Agreement, our latest Discounts and Terms, and Credit Approval



F46 Hay Head



F64 Corn Head



Reliable Straight-Line Feed

**HAY HEADS**

	Stock No	Weight	List
Hay head, 7', 5-bar, 104 tines, 20" floating auger, with gauge wheels	F46-4184R		\$16,890
Hay Head, 9' (99" tine-to-tine), 5-bar, 170 tines, 22" floating auger, with gauge wheels	F71-108	1500#	\$19,765
Drive kit for Scorpion 350 harvester, REQUIRED	K30453		\$1,220

**CORN HEADS- For Pull-Type Harvesters**

	Stock No	Weight	List
F64 90" (3-row) Corn head for pull-type, row-independent, ADD mount kit	F64-90	1900#	\$30,750
F61 120" (4-row) Corn head for pull-type, row-independent, ADD mount kit	F61-120	2600#	\$38,250
Dion F41,300 mount kit, for 90" corn head	K26247		\$2,295
Dion F41,300 mount kit, for 120" corn head	K25762		\$1,665
Dion 350 mount kit, for 90" corn head	K31908		\$2,295
Dion 350 mount kit, for 120" corn head	K30936		\$2,755
Dion 1224XC (Hesston 7500) mount kit, for 90" corn head	K26463		\$2,295
Dion 1224XC (Hesston 7500) mount kit, for 120" corn head	K25764		\$1,665
Case-IH FHX300 mount kit, for 90" corn head	K27500		\$2,295
Case-IH FHX300 mount kit, for 120" corn head	K27605		\$2,800
Gehl 1065,1075,1085,1265,1275,1285 mount kit, for 90" corn head	K26234		\$2,800
Gehl 1260,1265,1275,1285 mount kit, for 120" corn head	K26190		\$2,800
John Deere 3940,3950,3960,3970,3955,3965,3975 mount kit, for 90" corn head	K27144		\$2,295
New Holland 900 mount kit, for 90" corn head	K27494		\$2,295
New Holland FP230,FP240 mount kit, for 90" corn head	K27500		\$2,295
New Holland FP230,FP240 mount kit, for 120" corn head	K27605		\$2,800
Rotary lift kit for downed corn, for one side, hydraulic, for 90" and 120" heads	K26898		\$2,770

**CORN HEAD- For Self-Propelled Harvesters**

	Stock No	Weight	List
F63 120" (4-row) Corn head for self-propelled, row-independent, ADD mount kit	F63-120		\$43,770
John Deere 5000-Series mount kit, for 120" corn head	K26665		\$4,415
John Deere 6000,7000-Series mount kit, for 120" corn head	K27515		\$4,860
New Holland 1900,2100-Series mount kit, for 120" corn head	K26780		\$4,860
New Holland FX-Series mount kit, for 120" corn head	K27516		\$4,860

**FREIGHT:** FOB Factory: to Wellsville, UT - hay head \$950; corn head \$950; Add \$1.00/mile for delivery

**FACTORY WARRANTY:** 1 Year, with limitations. Labor must be pre-approved.

All orders are also subject to the dealer Sales & Security Agreement, our latest Discounts and Terms, and Credit Approval

### SLR BALE FEEDER- For Big Square & Round Bales

Stock No Weight List



RS2 for Round and Square Bales

Easy Operating Hyd Tilt + Chain Outfeed

All-Hydraulic Bale Loader

RS2 Trailed Feeder, self-loads 3300 lb bales, 5'4" tilt table, hydraulic drive, carries 2 bales with square bale table extension, 3rd pickup tine, 400/60-15.5 flotation tires, mudguard fenders, clevis

RS2 2900# \$24,900

Square bale table extension, for 8' bales, folds up for transport, ADD

12835 \$650

Mudguard fenders, heavy-duty ADD

12839 \$850

18" Discharge extension kit, for added discharge height and reach, ADD

14573 \$1,545

Pintle hitch, pivoting, exchange for clevis hitch

n/c

### CHAIN-TYPE BALE FEEDER- For 4' Wide Round Bales

Stock No Weight List



G2 for Round Bales, 3-Point or Loader Mount

G2X2 for Round Bales, Trailed

G2 Feeder, Cat 2 mount, self-loading either end, hydraulic latch kit, hydraulic drive, stainless bed

G2 1144# \$9,850

Rope loading latch kit, EXCHANGE for hydraulic kit,

n/c

G2X2 Trailed, self-loading, hyd drive, swivel hitch, carries 2 bales

G2X2 2000# \$19,800

### BALE BUGGY UTV FEEDER- For Round Bales up to 4'x6' diameter

Stock No Weight List



TPSI Bale Buggy feeder, trailed, ground drive (no PTO or hyd needed), for UTV, tractor or truck

TPSI 950# \$11,900

**FREIGHT:** FOB Wellsville, UT - Delivery to dealer- \$800 unassembled, \$1,200 assembled. Call for a quantity rate quote

**ASSEMBLY:** RS2 trailed feeder \$900; Bale Buggy \$550; G2 3-point feeders are mostly assembled

**FACTORY WARRANTY:** 2 Years on parts and labor, 3 years on frame, with pre-approval, with limitations

All orders are also subject to the dealer Sales & Security Agreement, our latest Discounts and Terms, and Credit Approval



**2277 Horizontal Beater Spreader**



**5440 Extravert Vertical Spreader**



**8610 Extravert Vertical Spreader**

STANDARD FEATURES on all Hagedorn spreaders: 2 beaters, hydraulic endgate, slurry pan, sequence & control valve, 3/4" solid poly floor & side rails, wood side rails, front splash guard, 3000 psi JIC hydraulic fittings, splined drive shafts

## HORIZONTAL BEATERS

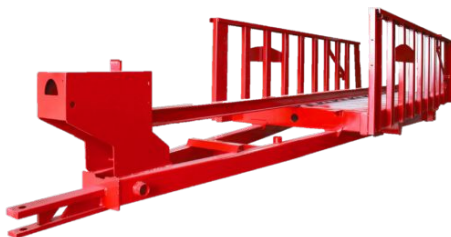
	Stock No	Weight	List
2277, 421 bu heaped (270 cf level), seq valve, 1000 PTO, 12k hubs, 90+ hp, used 425x22.5 tires	2277	9000#	\$59,640
2277, 421 bu heaped (270 cf level), seq valve, 1000 PTO, 12k hubs, 90+ hp, new 500/50R22.5 tires	2277+	9000#	\$63,070

## EXTRAVERT VERTICAL BEATERS

	Stock No	Weight	List
5290, 425 bu heaped (290 cf level), 1000 PTO, seq valve, 12k hubs, 120+ hp, used 425x22.5 tires	5290	10000#	\$61,731
5290, 425 bu heaped (290 cf level), 1000 PTO, seq valve, 12k hubs, 120+ hp, new 500/50R22.5 tires	5290+	10000#	\$65,161
5440, 550 bu heaped (440 cf level), 1000 PTO, seq valve, 16k hubs, 150+hp, used 425x22.5 tires	5440	12000#	\$65,184
5440, 550 bu heaped (440 cf level), 1000 PTO, seq valve, 16k hubs, 150+hp, new 550/60x22.5 tires	5440+	12000#	\$76,397
5440, 550 bu heaped (440 cf level), 1000 PTO, seq valve, 16k hubs, 150+hp, new 700/50x22.5 tires	5440++	12000#	\$83,867
8610, 740 bu heaped (594 cf level), 1000 1 3/4" PTO, seq valve, 20k hubs, 220+hp, 750/45R26.5 tires	8610	19000#	\$140,478

## OPTIONS

	Stock No	Weight	List
1000 rpm PTO driveline, 1 3/8" shaft, EXCHANGE for 540 PTO (Standard on 5290,2277)		10#	N/C
1000 rpm PTO driveline, 1 3/4" shaft, EXCHANGE for 1 3/8" (Standard on 5440,8610)		15#	N/C
Bull pull hitch, Cat 4, Model 5290/5440, at factory, ADD			\$265
K80 hitch, Model 5290/5440, at factory, ADD			\$630
Drop axles, lowers spreader by 6", (standard on 5440) at factory		25#	N/C
Straight axles, raises spreader by 5", (standard on 2277/5290), at factory			N/C
Scale system, Model 5290/5440			\$6,413



**Strong welded frame with strategic flex**



**Smooth, solid poly board sides**



**Simple, stacked push cylinders**

**FREIGHT:** Model 227/2277/5290 \$4,900 to the dealer; Model 5440, \$5,900 to the dealer; Model 8610 \$6,900 to the dealer

**ASSEMBLY:** Model 227/2277 \$250; Model 5290/5440 \$500; Model 8610 \$800

**FACTORY WARRANTY:** 1 Year on parts; 5 years on poly boards; 6 mo on new tires, 2 mo on used tires; with limitations

All orders are also subject to the dealer Sales & Security Agreement, our latest Discounts and Terms, and Credit Approval



9400-Series In-Furrow Plows



6306 On-Land Plow



Plow Bottom Detail

## 9400 IN-FURROW PLOW

	Stock No	Weight	List
4-Bottom 18", shear bolt, 7"x7"x.5" main frame, adjustable rear gauge wheel, new swing cylinder lock mechanism, steel wing covers, heat treated points, steel landsides, for 100-140 hp minimum	9404		\$16,263
3-Bottom (4-1) 18", DEDUCT 1 BTM1 from 9404 plow, for 75-105 hp minimum	9403		\$13,477
5-Bottom (4+1) 18", ADD 1 BTM1 plus 1 BEAM2 to 9404 plow, for 125-175 hp min	9405		\$18,816
Bottom kit, bolts to plow beam, steel wing covers, heat treated points, steel landsides	BTM1		\$2,400
Beam extension, 2-foot, with bolts/nuts	BEAM2		\$150

## 6300 ON-LAND PLOW

	Stock No	Weight	List
6-Bottom 18", shear bolt, 7"x7"x.5" main frame, front & rear gauge wheels, steel wing covers, heat treated points, steel landsides, for 150-210 hp minimum	6306		\$28,053
5-Bottom (6-1) 18", DEDUCT 1 BTM1 from 6306 plow, for 125-175 hp minimum	6305		\$25,447
7-Bottom (6+1) 18", ADD 1 BTM1 plus 1 BEAM2 to 6306 plow, for 175-245 hp min	6307		\$30,658
8-Bottom (6+2) 18", ADD 2 BTM1 plus 2 BEAM2 to 6306 plow, for 200-280 hp min	6308		\$35,263
Bottom kit, bolts to plow beam, steel wing covers, heat treated points, steel landsides	BTM1		\$2,400
Beam extension, 2-foot, with bolts/nuts	BEAM2		\$150
Switch rake, single row angled harrow to level soil, for 6305, 6306	6390-56		\$8,950
Switch rake, single row angled harrow to level soil, for 6307, 6308	BEAM2		\$9,150

## PLOW OPTIONS

	Stock No	Weight	List
UHMW polyethylene wing covers, for sticky soils, DEDUCT per bottom			(\$100)
Hard-surface points, ADD per bottom			\$100

## BENEFITS WITH HARRELL PLOWS

Plows are mostly pre-assembled. Dealer labor time is only 1-2 hours per plow.

All models can add or delete bottoms for future change and higher resale value.

All models use the same bottoms, beam extensions and tailwheels, for easy parts stocking.

All models have easy-adjust tailwheels, including the 9403 3-bottom, for depth control.

All wear parts interchange with the original Harrell and LMC plows, for parts sales opportunities.



**FREIGHT:** FOB Wellsville, UT; Delivery for one plow is \$1.50/mile from Wellsville, UT. Call for higher quantities  
**ASSEMBLY,** by dealer: 9400 plow 1 hour (install tailwheel); 6300 plow 4 hours (attach main beam to frame, install tailwheel).  
 All orders are also subject to the dealer Sales & Security Agreement, our latest Discounts and Terms, and Credit Approval



Farm Boss Rack & Bale King Rack



Round Bale Rack & Mighty Bale Hauler



Bale Thrower Rack

## FLAT RACKS (Add Wagon)

	Stock No	Weight	List
8.5' x 16' Regular-duty flat rack, 6" beams, steel mesh deck, ADD wagon			\$3,080
18', 20', 22', 24', ADD per extra foot			\$140
8.5' x 16' Regular-duty flat rack, 6" beams, steel checker plate deck, ADD wagon			\$3,605
18', 20', 22', 24', ADD per extra foot			\$170
8.5' x 20' Farm Boss HD flat rack, 10" beams, steel mesh deck, ADD wagon			\$4,490
22', 24', 26', 28', 30', 32', ADD per extra foot			\$140
8.5' x 20' Farm Boss HD flat rack, 10" beams, steel checker plate deck, ADD wagon			\$5,010
22', 24', 26', 28', 30', 32' ADD per extra foot			\$150
8.5' x 36' Farm Boss HD flat rack, 12" beams, steel mesh deck, ADD wagon			\$7,515
8.5' x 36' Farm Boss HD flat rack, 12" beams, steel checker plate deck, ADD wagon			\$8,135
8' x 20' Bale Thrower Rack, ADD wagon			\$5,685
8' x 24' Bale Thrower Rack, ADD wagon			\$6,320
4' x 8' Mini flat rack, steel mesh deck, with 2 slant end gates and 3' rear flat gate, with 2-ton wagon			\$3,550
Tie-down chains to secure the rack to a wagon			\$70
Extended rear hitch			\$340
LED rear light kit, 15' cord, 7-pin plug			\$810

## FEEDERS



## DUMP TRAILERS



**FREIGHT:** FOB St. Clements ON Canada; Call for freight rate (approx \$.08 x length x miles, for 1 or a stack)

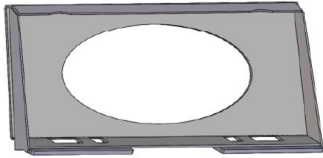
**FACTORY WARRANTY:** 1 Year parts and local labor, for farm use; with limitations

All orders are also subject to the dealer Sales & Security Agreement, our latest Discounts and Terms, and Credit Approval

Hundreds of other models, options and sizes available to fit most loaders. See the **Martatch Catalog**

### MOUNT PLATES & ADAPTERS

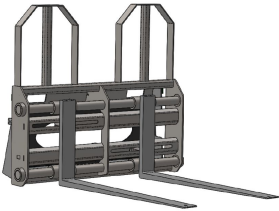
**Stock No Weight List**



Skid steer, Martatch weld-on, 1/4" plate, continuous welds	BO500	57#	\$203
Alo/Euro/Global, weld-on, 1-piece	AO600	56#	\$203
Deere 640/740, Martatch weld-on, 2-piece	JD640		\$313
Adapter, converts loader to universal skid steer mount	MAA-A	140#	\$1,319

### PALLET FORKS

**Stock No Weight List**



Utility 2000#, full guard, 42" tines, skid steer mount	MUPFN42	265#	\$1,031
Standard 3700#, step-thru guard, 48" tines, skid steer mount	MLDPFN48	365#	\$1,309
Heavy 5500#, step-thru guard, 48" tines, skid steer or alo mnt	MRDPFN48	395#	\$1,587
Heavy 7500#, full guard, 54" tines, any Class B mount	MHDPFN54	680#	\$2,348

### BALE SPEARS

**Stock No Weight List**



Triple Spear, with 3 forged 39" tines, skid steer mount	TS-BO500	157#	\$860
Triple Spear, with 3 forged 39" tines, Alo/Euro/Global mount	TS-AO600	177#	\$860
Upper guard, bolt-on, for carrying two bales			\$275
HD Quad spear, 50"-84" high, 4 39" forged tines, skid steer mount	QSX-BO500	430#	\$2,306
HD Quad spear, 50"-84" high, 4 39" forged tines, Alo/Euro/Global	QSX-AO600	430#	\$2,306
Tine, 39" JDog Conus II, forged tapered style, with nut		17.2#	\$80
Tine, 49" JDog Conus II, forged tapered style, with nut		20.6#	\$90
Sleeve, weld-on, fits JDog and other Conus II tapered tines		2.6#	\$11

### LOADER BUCKETS- 1/4" Ends, 3/16" Backs, 3/4"x4" Welded Edge

**Stock No Weight List**



72" Skid Steer Std Bucket, 22.5 cf heaped, 32" deep, 19" high	MBR72M	562#	\$1,652
84" Skid Steer HV Bucket, 35 cf heaped, 36" deep, 30" high	MBR84HV	795#	\$2,031
72" Loader Std Bucket, 21 cf heaped, 30" deep, 26" high	MLBR72M	605#	\$1,620
84" Loader Large Bucket, 42cf heaped, 34" deep, 30" high	MLBR84L	760#	\$2,189
96" Telehandler Bucket, 2.3 yd heaped, all 1/4" AR400, 6" edge	MTHB96M	1565#	\$4,817
Heavy-Duty version. All 1/4" material, 3/4" x 6" edge			Add 10%
Top Grill, 12" high, ADD per foot		per ft	\$50
Bolt-on edge, 3/4" x 6" double-bevel, w/bolts, ADD per foot		per ft	\$60

### STONE FORK (SKELETON BUCKET)- Retainer Tines

**Stock No Weight List**



66" Stone Fork, 40" tines on 3" centers, skid steer mount	MRSF66	725#	\$2,696
72" Stone Fork, 40" tines on 3" centers, skid steer mount	MRSF72	775#	\$2,917
84" Stone Fork, 40" tines on 3" centers, skid steer mount	MRSF84	875#	\$3,378
96" Stone Fork, 40" tines on 3" centers, skid steer mount	MRSF96	925#	\$3,654

### GRAPPLES

**Stock No Weight List**



84" Hay Grapple Bucket, for big bales, 2 cyl, hoses, Code A mount	MHGR84	2105#	\$5,243
72" Scrap Bucket Grapple, 2 cyl, hoses, skid steer mount	MBG72	945#	\$5,254
72" Root Rake Grapple, AR400 tines, 2 cyl, hoses, skid steer mount	MRRG72	935#	\$4,288
69" Debris Grapple, 37" tines, 2 cyl, hoses, skid steer mount	MDG6937	980#	\$6,615

**FREIGHT:** FOB Wellsville, UT. Call for delivery rates. \*FREE DELIVERY on attachment stock orders of \$12,000 or more (at list)

**FACTORY WARRANTY:** 1 year on parts and pre-approved labor; with limitations

All orders are also subject to the dealer Sales & Security Agreement, our latest Discounts and Terms, and Credit Approval



Hundreds of other models, options and sizes available to fit most loaders. See the **Martatch Catalog**

## SNOW PUSHERS

**Stock No Weight List**



7' x 30" Utility, rubber edge, AR400 skid shoes, mount, 30-50 hp	SP84X30U	855#	\$3,643
8' x 30" Utility, rubber edge, AR400 skid shoes, mount, 30-50 hp	SP96X30U	915#	\$3,931
8' x 34" Medium, rubber edge, AR400 skid shoes, mount, 40-90 hp	SP96X34	1080#	\$5,111
12' x 34" Medium, rubber edge, AR400 skid shoes, mount, 40-90 hp	SP144X34	1365#	\$5,911
12' x 34" Medium, with bucket edge mount & binders, 40-90 hp	SP144X34B	1365#	\$5,991
12' x 38" Heavy, with mount, 80-120 hp	SP144X38	1615#	\$7,314
14' x 42" Heavy, with mount, 110-150 hp	SP168X42	2685#	\$9,730



Pusher with steel fixed edge			Same price
Pusher with steel spring-trip edge			Add 6%
Upper back-drag rubber edge, rubber or steel, ADD per foot	SPBD	per ft	\$90
Lateral float, for following uneven pavement, ADD	SPLF		\$1,603
Spring-trip end plates, SP38 or SP42, ADD			\$3,000

## COMPACT ANGLE SNOW BLADES- Spring-Trip Blade

**Stock No Weight List**



66" x 20" Compact, relief valve, lateral float, hoses, mount, 23-35 hp	SB66x20	460#	\$3,268
72" x 20" Compact, relief valve, lateral float, hoses, mount, 23-35 hp	SB72x20	475#	\$3,355
78" x 20" Compact, relief valve, lateral float, hoses, mount, 23-35 hp	SB78x20	490#	\$3,437

Blade with manual angle Deduct (\$100)

## ANGLE SNOW BLADES- Spring-Trip Edge

**Stock No Weight List**



6' x 24" Utility, relief valve, lateral float, hoses, mount, 30-50 hp	SB72x24	820#	\$4,740
7' x 24" Utility, relief valve, lateral float, hoses, mount, 30-50 hp	SB84x24	865#	\$4,990
7' x 30" Medium, relief valve, lateral float, hoses, mount, 30-80 hp	SB84x30	910#	\$5,961
8' x 30" Medium, relief valve, lateral float, hoses, mount, 30-80 hp	SB96x30	975#	\$6,277
10' x 34" Heavy, relief valve, lateral float, hoses, mount, 60-125 hp	SB120x34	1325#	\$9,478
12' x 34" Heavy, relief valve, lateral float, hoses, mount, 60-125 hp	SB144x34	1475#	\$10,192
14' x 42" Heavy, relief valve, lateral float, hoses, mount, 90-200 hp	SB168x42	2375#	\$15,263

## SNOW WING BLADES- 30" Rotating Wings, Spring-Trip Edge

**Stock No Weight List**



7'-12' x 30" Skid Steer Wing, 3-way elect valve, hoses, 55-85 hp	EWSB84X30	1835#	\$13,068
8'-13' x 30" Skid Steer Wing, 3-way elect valve, hoses, 55-85 hp	EWSB96X30	2085#	\$13,536
8'-13' x 34" HD Wing, 3-way elect valve, hoses, mount, 80-155 hp	EWSB96X34	2250#	\$17,221
10'-15' x 34" HD Wing, 3-way elect valve, hoses, mount, 80-155 hp	EWSB120X34	2350#	\$17,885

Top Grill guard, 12" high, ADD per foot	SBG	per ft	\$60
Snow blade end marker, 30" high, EACH	SBM		\$75
Soft Ride hydraulic accumulator	SBSRA		\$483

## SAND/SALT SPREADERS

**Stock No Weight List**



18 CF Skid Steer Spin Sander, hydraulic drive	MSS18		\$4,413
Sidewalk kit	MSS18SK		\$158

**FREIGHT:** FOB Wellsville, UT. Call for delivery rates. \*FREE DELIVERY on attachment stock orders of \$12,000 or more (at list)

**FACTORY WARRANTY:** 1 year on parts and pre-approved labor; with limitations

All orders are also subject to the dealer Sales & Security Agreement, our latest Discounts and Terms, and Credit Approval



3-Point Drill



Trailed Drill



Coulter- Double Disc- Drop- Closer

**Features on all drills-**

Acre Meter - Precision Futed Meters - 3 Bu/Ft Welded Hopper (2 bu on 5') - Weather Tight Lid - Double Disc True V Openers  
 Folding Metal Walk Board w/Step - 15" Ripple No-Till Coulters - SMV & Reflectors - Light Package - Adjustable Seeding Rates  
 Staggered Mounting Brackets - Seed Level Indicator Glass - 2x13 Press Wheels - D-Handle Depth Adjustment

**2300 DRILL, 7.5" Spacing**

	Stock No	Weight	List
5-Foot, 3-Point, 8 openers	2300-0508M	2000#	\$17,946
7.5-Foot, 3-Point, 12 openers	2300-0712M	2965#	\$23,462
10-Foot, 3-Point, 16 openers, 15" gauge wheels/tires	2300-1016M	3820#	\$33,395
15-Foot, 3-Point, 24 openers, 15" gauge wheels/tires	2300-1524M	5420#	\$46,343
5-Foot, Trailed, 8 openers, single tires, for 35+ hp	2300-0508T	2205#	\$24,482
7.5-Foot, Trailed, 12 openers, single tires, for 60+ hp	2300-0712T	3170#	\$29,996
10-Foot, Trailed, 16 openers, dual tires, for 75+ hp	2300-1016T	4070#	\$37,043
15-Foot, Trailed, 24 openers, dual tires, for 115+hp	2300-1524T	5730#	\$51,805

**2300 Drill, 6" Spacing- In Development, CALL**

Stock No	Weight	List
----------	--------	------

**DRILL OPTIONS**

	Stock No	Weight	List
Small seed attachment 5-foot	SS05	70#	\$1,744
Small seed attachment 7.5-foot	SS07	80#	\$2,517
Small seed attachment 10-foot	SS10	100#	\$3,238
Small seed attachment 15-foot	SS15	190#	\$5,679
Small seed attachment, with native grass attachment, 5-foot	SS/NGS05	295#	\$10,773
Small seed attachment, with native grass attachment, 7.5-foot	SS/NGS07	580#	\$14,277
Small seed attachment, with native grass attachment, 10-foot	SS/NGS10	800#	\$19,767
Small seed attachment, with native grass attachment, 15-foot	SS/NGS15	840#	\$33,283
Rear cage roller, 5-foot, factory installed			\$1,585
Rear cage roller, 7.5-foot, factory installed			\$2,869
Rear cage roller, 10-foot, factory installed			\$3,171
Rear cage roller, 15-foot, factory installed			\$4,686
Delete front coulter assembly, for conventional tillage only, DEDUCT per opener			(\$450)
Gauge wheel package, with hardware			\$1,887

**FREIGHT:** FOB Kalida, OH. Add 6% of list price for assembly & delivery for one unit; 4% for two or more.

**FACTORY WARRANTY:** 1 Year on parts only. Pre-approval required. With limitations.

All orders are also subject to the dealer Sales & Security Agreement, our latest Discounts and Terms, and Credit Approval



Rolling Finisher



Exclusive Reversible Double Bar Roller



Stack & Flat Fold Models

Exclusive dual double bar rollers - Heavy-duty 1 1/4" 4-bolt bearings - Reinforced front "A" Frame - 7.60x15 Tires Telescoping 5"x5" drawbar - Gauge wheel option - SMV & reflector package - Grease zerk & nut guards Double down pressure roller springs - Quick-Lift wing fold hydraulic bypass - Light package Quick-Lift 7/8" x 13" angled spike bar - Only 1 hydraulic remote needed - Reversible gentle/aggressive rollers

### 3500 HARROW - 12' Center

**Stock No Weight List**

11'9" Working width, rigid, angled tooth bar, 11'9" transport		\$14,498
13'3" Working width, rigid, angled tooth bar, 13'3" transport		\$14,755
19'8" Working width, flat folding, angled tooth bar, 3' wings, 11'9" transport	3800#	\$19,041
21'2" Working width, flat folding, angled tooth bar, 4' wings, 11'9" transport		\$19,758
22'8" Working width, flat folding, angled tooth bar, 5' wings, 11'9" transport		\$20,475
24'2" Working width, flat folding, angled tooth bar, 6' wings, 11'9" transport		\$21,379
25'8" Working width, stack folding, angled tooth bar, 6' wings, 13'5" transport		\$22,506
27'2" Working width, stack folding, angled tooth bar, 3'+4' wing extensions*, 13'5" transport		\$27,971

### 3500 HARROW - 14' Center

**Stock No Weight List**

14' Working width, rigid, angled tooth bar, 14' transport		\$16,140
26'5" Working width, flat folding, angled tooth bar, 6' wings, 14' transport		\$23,091
27'11" Working width, flat folding, angled tooth bar, 6' wings, 14' transport		\$24,016
29'5" Working width, stack folding, angled tooth bar, 3' + 4' wing extensions*, 15'8" transport	4700#	\$29,786
30'11" Working width, stack folding, angled tooth bar, 4' + 4' wing extensions*, 15'8" transport		\$30,299
32'5" Working width, stack folding, angled tooth bar, 4' + 4'6" wing extensions*, 15'8" transport		\$30,913
33'11" Working width, stack folding, angled tooth bar, 5' + 4'6" wing extensions*, 15'8" transport		\$31,529
35'5" Working width, stack folding, angled tooth bar, 5' + 5' wing extensions*, 15'8" transport		\$32,462

### 3500 HARROW - 16' Center

**Stock No Weight List**

16'4" Working width, rigid, angled tooth bar, 16'4" transport		\$18,241
17'10" Working width, rigid, angled tooth bar, 17'10" transport		\$18,765
Other sizes, 24'2" to 40'9"		Call

### OPTIONS

**Stock No Weight List**

*Wing gauge wheel package, 2 7.60-15 tires, hydraulic lift - RECOMMENDED with wing extensions		\$2,963
Straight spike tooth bar or spring tine bar, rather than angled tooth, ADD		n/c
Tire, 9.5L-15 tire on 15x8 wheel, EXCHANGE for 7.60-15 tire, EACH		\$65

**FREIGHT:** FOB Kalida, OH. Add 12% of list price for assembly & delivery for one unit, 8% for two or more.

**ASSEMBLY:** Factory assembled included, except for installing hitch and optional gauge wheels

**FACTORY WARRANTY:** 1 Year on parts only. Pre-approval required. With limitations.

All orders are also subject to the dealer Sales & Security Agreement, our latest Discounts and Terms, and Credit Approval



Strip Till Row Unit + Rolling Basket



Rigid Bar + Markers



Folding Bar

### STRIP TILL INDIVIDUAL ROW UNIT

**Stock No Weight List**

7" Toolbar clamp - Parallel linkage w/downpressure springs - 15" Martin trash wheels - 20" Flex coulters - Shank w/reversible wear bar  
2" Hardened point - 18" Notched closing discs w/downpressure springs. Recommend 18-22 tractor hp per row

Single row unit with shear bolt shank, 20" coulters	340#	\$3,468
Single row unit with spring auto-reset shank, 20" coulters	375#	\$3,843

### STRIP TILL IMPLEMENT - 30" Rows- Call for 22", 36", 38", 40"

**Stock No Weight List**

6-Row 30" rigid 7"x7" toolbar, Cat II-III-III hitch, shear bolt shanks, 20" coulters	2710#	\$23,349
6-Row 30" rigid, as above, with spring auto-reset shanks	2925#	\$25,597
8-Row 30" rigid 7"x7" toolbar, Cat II-III-III hitch, shear bolt shanks, 20" coulters	3590#	\$30,633
8-Row 30" rigid, as above, with spring auto-reset shanks	3842#	\$33,630
8-Row 30" folding double 7"x7" toolbar w/gauge wheels, Cat II-III-III hitch, shear bolt shanks, 20" coulters	4446#	\$39,711
8-Row 30" folding, as above, with spring auto-reset shanks	4726#	\$42,709
12-Row 30" folding double 7"x7" toolbar w/gauge wheels, Cat II-III-III hitch, shear bolt shanks, 20" coulters	6126#	\$54,210
12-Row 30" folding, as above, with spring auto-reset shanks	6546#	\$58,707

### STRIP TILL OPTIONS

**Stock No Weight List**

Heavy-duty shank, high-strength steel for better rock resistance, 8" max depth, ADD per row		\$129
20" Coulters closing blades, rather than 18" notched discs, ADD per row		\$86
Fertilizer tube, SPECIFY NH3 & dry or NH3 & liquid, ADD per row		\$69
Trash wheel lockdown kit, ADD per row		\$35
Remove 15" Martin trash wheels, DEDUCT per row		(\$655)
Rear hitch, rigid mount		\$2,242
Gauge wheel assembly, pair, 7.60-15 8-ply tires (standard with folding units)		\$1,664
Row freshers, per row		\$702
Drawbar kit, 2 hydraulic lift cylinders, hoses, 4 11L-15 8-ply tires, for 6-row or 8-row		\$12,944
6-Row rear 12" rolling basket kit, for rigid bar, straight blades		\$5,679
8-Row rear 12" rolling basket kit, for rigid bar, straight blades		\$7,414
8-Row rear 12" rolling basket kit, for folding bar, straight blades		\$8,560
12-Row rear 12" rolling basket kit, for folding bar, straight blades		\$11,201
12" rolling basket with contoured blades, ADD per row		\$60

**FREIGHT:** FOB Kalida, OH. Add 6% of list price for assembly & delivery for one unit; 4% for two or more.

**ASSEMBLY:** Factory assembly is included.

**FACTORY WARRANTY:** 1 Year on parts only. Pre-approval required. With limitations.

All orders are also subject to the dealer Sales & Security Agreement, our latest Discounts and Terms, and Credit Approval



8-Row Rigid



8-Row Folding



Shields & Other Options

## ROW CROP CULTIVATOR

	Stock No	Weight	List
Single row assembly, 36" clearance no tool bar, ADD shares		565#	\$2,894
2-Row, rigid bar, 36"-42", ADD shares	94-2	1725#	\$10,448
4-Row, rigid bar, SPECIFY 30"-40", ADD shares	94-4	2600#	\$16,497
6-Row, rigid bar, SPECIFY 30"-40", ADD shares	94-6	3500#	\$22,832
8-Row, rigid bar, 30", ADD shares	94-830	4350#	\$28,322
8-Row, rigid bar w/truss kit, SPECIFY 36"-40", ADD shares	94-8xx	4500#	\$30,370
10-Row, rigid bar w/truss kit, 30", ADD shares	94-1030R	5450#	\$36,153
10-Row, rigid bar w/truss kit, 36"-38", ADD shares	94-1036R	5575#	\$40,534
8-Row, folding bar, SPECIFY 30"-38', ADD shares	94-8F	5300#	\$34,733
10-Row, folding bar, 30", ADD shares	94-1030F	6125#	\$42,944
10-Row, folding bar, 36"-38", ADD shares	94-1036F	6250#	\$47,101
12-Row, folding bar, 30", ADD shares	94-1230F	7025#	\$48,033
12-Row, folding bar, 36"-38", ADD shares	94-1236F	8250#	\$51,566
16-Row, folding bar, 30", ADD shares	94-1630F	9950#	\$67,752
14" Share set, 17.5" cut, for outside rows, order one set for any cultivator	RM-M5278	10#	\$77
17" Share set, 19" cut, order one set per row, plus one 14" set for outsides	RM-M5281	11#	\$78
19" Share set, 21" cut, order one set per row, plus one 14" set for outsides	RM-M5282	12#	\$83
21" Share set, 22.5" cut, order one set per row, plus one 14" set for outsides	RM-M5283	13#	\$92
23" Share set, 24.5" cut, order one set per row, plus one 14" set for outsides	RM-M5277	14#	\$100
25", 27", 30", 42" Share set			Call
Standard cultivator point	RM-J8216	3#	\$64

## OPTIONS

	Stock No	Weight	List
Open top shields for 20"-22" rows, order one set per row plus one extra for the outsides			Call
Open top shields for 30" rows, order one set per row plus one extra for the outsides			\$524
Open top shields for 36"-40" rows, order one set per row plus one extra for the outsides			\$568
Cut-away disk set, for 30" rows, order one set per row plus one extra for the outsides			\$1,182
Cut-away disk set, for 36"-40" rows, order one set per row plus one extra for the outsides			\$1,211
Ridgers for any size rows, order one set per row plus one extra for the outsides			\$215
Ridger extension kit, order one set per row			\$68
Liquid fertilizer tube kit, for 30" rows, order one set per row plus one extra		2#	\$81
Liquid fertilizer tube kit, for 36"-40" rows, order one set per row plus one extra		3#	\$110
Toolbar lift assist kit, with tires, cylinders, hoses, fasteners, for any cultivator		700#	\$8,471
Gauge wheel kit, 2 tires, manual height adjustment	RM-M3393	600#	\$1,939

**FREIGHT:** FOB Kalida, OH. To ID/UT \$150/linear foot, folded: To OR/WA \$190/linear foot, folded.

**ASSEMBLY:** Factory assembly is included.

**FACTORY WARRANTY:** 1 Year on parts only. Pre-approval required. With limitations.

All orders are also subject to the dealer Sales & Security Agreement, our latest Discounts and Terms, and Credit Approval

**FLEX SPIKE-TOOTH HARROW - 3, 4, 5 Bar**



3BF, 4BF, 5BF, 11" spikes



3BR, 4BR, 5BR, Harrow & Roller



3HD, 4HD, 5HD, Heavy 15" spikes

**SPRING TINE HARROW- 3, 4 Bar**



3BS 3-Bar, 7/16" x 18" tines



4BS 4-Bar



STR 3-Bar & Roller



FHD Heavy 3-Bar, 5/8" x 30" tines

**SOLID TOOTH HARROW**



1BA Standard, 13" teeth



SBR 1-Bar & Roller



SBD 1-Bar & Double Roller



J1B Jumbo 1-Bar, 17" teeth

**ROLLER HARROW**



SRH Single, 12", 8-Blade



RBR Round Bar, 14", 9-Bar



HDSRH Heavy Double-Bar, 12"



Double Roller (DRH, DRBR, HDDRH)

**HYDRAULIC LIFT**



Optional Hydraulic Roller Lift

**S-TINE LEVELER**



S-Tine Chisel Plow Leveler



Leveler w/Ratchet Adjust



Leveler w/One-Bar Harrow

**FREIGHT:** FOB Kalida, OH. Add 8% of list price for delivery. Call for volume shipments **ASSEMBLY:** Approx 1 Hour per section  
**FACTORY WARRANTY:** 1 Year on parts only. Pre-approval required. With limitations.

All orders are also subject to the dealer Sales & Security Agreement, our latest Discounts and Terms, and Credit Approval



Vibratory Screening Bucket



PTO Ditcher



60" Rock Picker



Tire Grabber

### SCREENING BUCKET

70" Screening bucket, skid steer mount, 7/8 yd, for 13-16 gpm w/case drain, 3 hoses & tips, one screen  
NOTE: The skid steer must have a case drain

Stock No	Weight	List
----------	--------	------

VSF-700-70	1250#	\$8,413
------------	-------	---------

Extra screen, 1/8", 1/4", 3/8", 1/2", 3/4", 1", 1 1/2", 2", 2 1/2"  
Extra screen, 3", 3 1/2", 4"

\$830  
\$970

### COVER CROP CRIMPER

5'6" Working width, Cat 1/2/3 hitch, parking stands, water storage, lights  
8'6" Working width, Cat 2/3N/3 hitch, parking stands, water storage, lights  
10'6" Working width, Cat 2/3N/3 hitch, parking stands, water storage, lights  
12'6" Working width, Cat 2/3N/3 hitch, parking stands, water storage, lights  
15'6" Working width, Cat 2/3N/3 hitch, parking stands, water storage, lights  
20'6" Working width, Cat 2/3N/3 hitch, parking stands, water storage, lights  
20'6" Working width, Folding, Cat 2/3N/3 hitch, parking stands, water storage, lights

Stock No	Weight	List
----------	--------	------

105M	810#	\$4,895
108M	1290#	\$7,560
110M	1620#	\$8,748
112M	1885#	\$10,433
115M	2280#	\$11,610
120M	2940#	\$15,498
320F	4520#	\$30,024

Adding water adds about 40 lb per foot to machine weight

### PTO DITCHER

Center-cut ditcher, Cat 2-3, banded belt drive, cuts to 12" deep, 4 blades, ripper point, 540 PTO  
Right offset ditcher, offset 34" to the right, 540 PTO  
Left offset ditcher, offset 34" to the left, 540 PTO

Stock No	Weight	List
----------	--------	------

PD-400-CC	849#	\$6,630
PD-400-RH	931#	\$7,943
PD-400-LH	931#	\$7,705

1000 PTO drive, SPECIFY 1 3/8 or 1 3/4"

n/c

### ROCK PICKER

60" Rock picker, trailed, hydraulic drive, 2 1/4 yard, hard tines & teeth, used 385-22.5 tires, 60+ hp

Stock No	Weight	List
----------	--------	------

RP-500	4800#	\$29,476
--------	-------	----------

### BALE SLICER

7'4" Bale slicer, skid steer mount, 2500# lift capacity, with cylinder & hoses, ADD couplers

Stock No	Weight	List
----------	--------	------

BS-600-30	380#	\$5,118
-----------	------	---------

3-Point hitch mount, Cat II-III, ADD

BS-1007-AS	26#	\$232
------------	-----	-------



Rock Picker, Dumped



Screening Bucket at Work



Tire Grabber at Work



Bale Slicer at Work

**FREIGHT:** FOB Kalida, OH. Add 8% of list price for delivery for one unit; Call for volume shipments.

**FACTORY WARRANTY:** 1 Year on parts only. Pre-approval required. With limitations.

All orders are also subject to the dealer Sales & Security Agreement, our latest Discounts and Terms, and Credit Approval



BFS Sickle Mower



DM Disc Mower



STORM/300 Front Disc Mower



TRES Mower-Conditioner

## SICKLE BAR MOWERS, 3-Point

	Stock No	Weight	List
5' Sickle, single blade, manual lift, double-cut action, extra blade, for 12+ hp	<b>BFT/150M</b>	460#	\$5,932
6' Sickle, single blade, manual lift, double-cut action, extra blade, removable guards, for 20+ hp	<b>BFS/180M</b>	576#	\$6,302
7' Sickle, dual blade, hydraulic lift, double-cut action, extra blade, removable guards, for 25+ hp	<b>BFS/210H</b>	620#	\$6,648
8' Sickle, dual blade, hydraulic lift, double-cut action, extra blade, removable guards, for 30+ hp	<b>BFS/240H</b>	673#	\$8,248
9' Sickle, dual blade, hydraulic lift, double-cut action, extra blade, removable guards, for 30+ hp	<b>BFS/270H</b>	720#	\$8,055
Sickle bar mowers are packed 2/crate. For one unit, ADD			\$75
Hydraulic lift kit, BFT150, BFS180, BFS210			\$487

## DRUM MOWERS, 3-Point

	Stock No	Weight	List
<b>5'6" Two-drum, safety release, 45+ hp</b>	<b>BT165</b>	<b>795#</b>	<b>\$6,725</b>
<b>6'1" Two-drum, safety release, 70+ hp</b>	<b>BT185</b>	<b>895#</b>	<b>\$7,115</b>
Hydraulic lift kit (optional)			\$625

## DISC MOWERS, 3-Point, Hydraulic Lift

	Stock No	Weight	List
5'6" Disc, 4 discs, top service bearings, safety release, 35+ hp	DM/4-2	910#	\$9,104
6'11" Disc, 5 discs, top service bearings, safety release, 45+ hp	DM/5	1000#	\$9,666
<b>7'10" Disc, 6 discs, top service bearings, safety release, 55+ hp</b>	<b>DM/6-2</b>	<b>1090#</b>	<b>\$10,240</b>
9'2" Disc, 7 discs, top service bearings, safety release, 65+ hp	DM/7	1420#	\$13,536
10'6" Disc, 8 discs, top service bearings, safety release, 75+ hp	DM/8-2	1522#	\$14,504
Wear resistant skid kit, for DM, ADD PER DISC			\$87
Quick-Change knife kit, for DM, ADD PER DISC			\$55

STORM Front Mount 9'8", 7 discs, suspension frame, 90+ hp	STORM-300	2006#	\$17,258
---	-----------	-------	----------

## DISC MOWER-CONDITIONERS, 3-Point

	Stock No	Weight	List
6'11" Disc, 5 discs, top service bearings, rubber rollers, for 80+ hp	DMC/5R	1766#	\$18,721
7'10" Disc, 6 discs, top service bearings, rubber rollers, for 90+ hp	DMC/6R	1876#	\$20,698

## DISC MOWER-CONDITIONERS, Trailed

	Stock No	Weight	List
10'6" Center Pull, 8 discs, top service bearings, rubber rollers, for 110+ hp	TRES320CP	4300#	\$34,811
<b>10'6" Center Pull, 8 discs, top service bearings, rubber rollers, for 110+ hp</b>	<b>TRES320CPR</b>		<b>\$38,645</b>

Wear resistant skids, for any TRES			\$700
Quick-Change knife kit, for TRES, ADD			\$443

**FREIGHT: Prices include assembly & delivery. Or, Deduct 5% for will call, and deduct 5% if not assembled**

**FACTORY WARRANTY: 12 Months; parts, FOB dealer; labor as pre-approved; with limitations**

All orders are also subject to the dealer Sales & Security Agreement, our latest Discounts and Terms, and Credit Approval

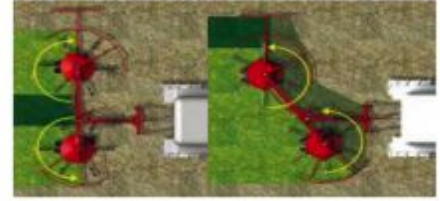




G6V/24 Hay Tedder



G6V/24TTP Carted Hay Tedder



DR420 Combo Left/Center Rake/Tedder



TOP/300 Combo Rake/Tedder



RR320-9 Rotary Rake



DUO/610 3-Pt 20' Twin Rake



DUO/780 25'6" Trailed Twin Rake

## HAY TEDDERS

**Stock No Weight List**

10' Tedder, 3-point, 2 rotors, 12 arms, hydr vertical fold, U-joint drives, 20+ hp (2/crate)	G2/103P	419#	\$4,066
10' Tedder, trailed, 2 rotors, 12 arms, hydr vertical fold, U-joint drives, 20+ hp (2/crate)	G2/10PT	419#	\$3,854
17' Tedder, 3-point, 4 rotors, 24 arms, hydr vertical fold, U-joint drives, 20+ hp	G4V/17-3P	1318#	\$10,630
24' Tedder, 3-point, 6 rotors, 36 arms, hydr vertical fold, U-joint drives, 30+ hp	G6V/24-3P	1917#	\$14,649
17' Tedder, trailed, 4 rotors, 24 arms, hydr vertical fold, U-joint drives, manual tilt, 20+ hp	G4V/17PT	1074#	\$8,947
19' Tedder, trailed, 4 rotors, 24 arms, hydr vertical fold, U-joint drives, manual tilt, 20+ hp	G4V/19PT	1153#	\$10,458
24' Tedder, trailed, 6 rotors, transport wheels, 36 arms, hydr vertical fold, wide-angle PTO, 30+ hp	G6V/24PT	1740#	\$14,487
24' Tedder, trailed, 6 rotors, with transport trolley, 40+ hp	G6V/24TTP	3300#	\$27,096
32' Tedder, trailed, 8 rotors, with transport trolley, 50+ hp	G8V/32TTP		\$31,150

## COMBINATION TEDDER-RAKE

**Stock No Weight List**

3-point Combo HayTop tedder-rake, center delivery, 10'6" working width, two tires	TOP/300	673#	\$6,852
3-point Combo tedder-rake, center or left side raking, 14' working width, four 18.850-8 tires	DR420	1104#	\$11,359

## SINGLE ROTOR RAKES

**Stock No Weight List**

3-Point rake, 9' dia rotor, 9 arms, 27 double tines, two 16.650-8 tires	RR320-9	782#	\$5,517
3-Point rake, 10'2" dia rotor, pivoting mount, 9 arms, 27 double tines, tandem axles, 4 16.650-8 tires	RR350/9PRO	1211#	\$7,573
3-Point rake, 13' dia rotor, 11 arms, 44 double tines, tandems, four 18.850-8 tires	RR420-3P	1323#	\$10,536
Trailed rake, 13' dia rotor, 11 arms, 44 double tines, hydr lift, tandems, four 18.850-8 tires	RR420	1370#	\$10,864

## TWIN ROTOR RAKES

**Stock No Weight List**

3-Point Twin rake, 10'2" rotors, 18 arms, 20' width, hydr fold, tandems, eight 18.850-8 tires 100+hp	DUO/610	2500#	\$19,335
3-Point Twin rake, 10'2" rotors, 22 arms, 19' to 21'4" width, hydr fold & width, tandems, 100+hp	DUO/650H	3100#	\$20,314
Trailed Twin center rake, 12'6" rotors, 22 arms, 23' to 25'6" width, tandems, 70+hp	DUO/780	4100#	\$31,394
Trailed Twin offset rake, for left single or twin side raking, up to 25'6" width, tandems, 70+hp	TRACER/780	4100#	\$36,011

**FREIGHT: Prices include assembly and delivery. Or, deduct 5% for will call, and deduct 5% if not assembled**

**FACTORY WARRANTY: 12 Months; parts, FOB dealer; labor as pre-approved; with limitations**

All orders are also subject to the dealer Sales & Security Agreement, our latest Discounts and Terms, and Credit Approval



Batrake



Maximus Rake + Poly Slides + Kicker



Easy-Rake ER/16 + Poly Slides

The only wheel rakes with 60" Jumbo wheels on all models

### 3-POINT WINDROW TURNERS

	Stock No	Weight	List
RP/3 3-Wheel windrow turner, Jumbo 60" wheels, 7' max raking width	RP/3	265#	\$1,150
RP/4 4-Wheel windrow turner, rocking dual arms, Jumbo 60" wheels, 9' max raking width	RP/4	393#	\$1,757
RP/5 5-Wheel windrow turner, rocking dual arms, Jumbo 60" wheels, 11' max raking width	RP/5	464#	\$2,206

### BAT RAKE, Independant Suspension, Remote Arm Transport Lock

	Stock No	Weight	List
8-Wheel, 16'-18' center delivery, 60" flex-tine wheels, high clearance cart, for 8'-10' windrowers	BR/8	1237#	\$9,384
10-Wheel, 18'-22' center delivery, 60" flex-tine wheels, high clearance cart, for 8'-12' windrowers	BR/10	1410#	\$10,113
12-Wheel, 20'-24' center delivery, 60" flex-tine wheels, high clearance cart, for 10'-14' windrowers	BR/12	1650#	\$11,164
Poly hay slide wind guard insert, for 60" flex-tine wheels, per wheel	RWG60		\$40
Rocking tandem axle kit, with 2 additional tires 18.850/8	18036995		\$978
Hydraulic arm angle kit	18032903		\$1,263
Center kicker wheel, hydraulic lift	18032136		\$717

### MAXIMUS RAKE, Wheels Forward, Dual Spring Rake wheel Suspension

	Stock No	Weight	List
12-Wheel, 21'-24' center delivery, 60" flex-tine wheels, high clearance cart, for 10'-14' windrowers	MR12	3060#	\$17,626
14-Wheel, 24'-27' center delivery, 60" flex-tine wheels, high clearance cart, for 12'-16' windrowers	MR14	3300#	\$18,333
16-Wheel, 27'-30', 60" flex-tine wheels, high clearance cart, with gauge wheels, for 14'-18' windrowers	MR14+2	3750#	\$20,448
Poly hay slide insert, for 60" flex-tine wheels, per wheel	RWG60		\$40
Rubberflex rigid rake wheel (Darf type), EXCHANGE PER WHEEL	RFLEX		\$233
Center kicker wheel, 3 wheels, hydraulic lift	18032111		\$1,508

### EASY-RAKE Bifold V-Rakes, Wheels Forward

	Stock No	Weight	List
12-Wheel 24', 60" flex-tine wheels, single rear wheels, 4 tires, for 10'-14' windrowers	ER/12	3100#	\$17,544
12-wheel 28', 60" flex-tine wheels, single rear wheels, 4 tires, for 12-16' windrowers	ER/14		\$20,581
16-Wheel 32', 60" flex-tine wheels, tandem rear axles, 8 tires, for 13'-18' windrowers	ER/16	4980#	\$21,248
16-Wheel 32' Auto-Steer, 60" flex-tine wheels, dual rear wheels, 8 tires	ER/16S	5290#	\$30,292
18-Wheel 35' Auto-Steer, flex frame, 60" flex-tine wheels, dual rear wheels, 12 tires	ER/18S	7055#	\$38,688
20-Wheel 38' Auto-Steer, flex frame, 60" flex-tine wheels, dual rear wheels, 12 tires	ER/20S	7495#	\$40,006
22-Wheel 41' Auto-Steer, flex frame, 60" flex-tine wheels, dual rear wheels, 12 tires	ER/22S		\$46,053
Poly hay slide insert, for 60" flex-tine wheels, per wheel	RWG60		\$40
Tandem rear axles for ER/12	18034220		\$1,150
Rubberflex rigid rake wheel (Darf type), EXCHANGE PER WHEEL	RFLEX		\$233
Suspension caster wheel with spring & shock absorber, EXCHANGE PER WHEEL	SUSP		\$800

**FREIGHT:** Prices include assembly & delivery. Or, deduct 5% for will call, and deduct 5% if not assembled.

**FACTORY WARRANTY:** 12 Months; parts, FOB dealer; labor as pre-approved; with limitations

All orders are also subject to the dealer Sales & Security Agreement, our latest Discounts and Terms, and Credit Approval



TD Grain Augers



14" Heavy-Duty Auger + Hopper



Oversize Intake, Double Flighting



Wheel jack + Hopper

**TOP DRIVE Portable Augers**

	<b>Stock No</b>	<b>Weight</b>	<b>List</b>
6" x 31' PTO Auger package, 1200 bu/hour, winch, overflow relief, new tires	TD631P+	830#	\$6,516
6" x 31' Electric Auger package, 1200 bu/hour, winch, overflow relief, new tires, ADD 3hp motor	TD631E+	840#	\$5,926
6" x 31' Gas Auger package, 1200 bu/hour, winch, overflow relief, new tires, ADD 13hp engine	TD631G+	900#	\$7,443
8" x 31' PTO Auger package, 2100 bu/hour, winch, overflow relief, new tires	TD831P+	975#	\$6,906
8" x 31' Electric Auger package, 2100 bu/hour, winch, overflow relief, new tires, ADD 5hp motor	TD831E+	930#	\$6,344
8" x 31' Gas Auger package, 2100 bu/hour, winch, overflow relief, new tires, ADD 20hp engine	TD831G+	1045#	\$8,201
8" x 51' PTO Auger package, 2100 bu/hour, winch, overflow relief, new tires	TD851P+	1700#	\$9,627
8" x 51' Electric Auger package, 2100 bu/hour, winch, overflow relief, new tires, ADD 10hp motor	TD851E+	1600#	\$9,122
8" x 61' PTO Auger package, 2100 bu/hour, winch, overflow relief, new tires	TD861P+	1970#	\$11,087
8" x 61' Electric Auger package, 2100 bu/hour, winch, overflow relief, new tires, ADD 10hp motor	TD861E+	1920#	\$10,578
10" x 31' PTO Auger package, 3200 bu/hour, winch, overflow relief, new tires	TD031P+	1320#	\$9,284
10" x 31' Electric Auger package, 3200 bu/hour, winch, overflow relief, new tires, ADD 7.5hp motor	TD031E+	1345#	\$8,591
10" x 31' Gas Auger package, 3200 bu/hour, winch, overflow relief, new tires, ADD 20hp engine	TD031G+	1385#	\$10,350
10" x 61' PTO Auger package, 3200 bu/hour, winch, overflow relief, new tires	TD061P+	2550#	\$13,795
10" x 61' Electric Auger package, 3200 bu/hour, winch, overflow relief, new tires, ADD 15hp motor	TD061E+	2545#	\$13,293
12" x 31' PTO Auger package, 5000 bu/hour, winch, overflow relief, new tires	TD231P+	1560#	\$14,069
12" x 31' Electric Auger package, 5000 bu/hour, winch, overflow relief, new tires, ADD 15hp motor	TD231E+	1485#	\$14,325
12" x 61' PTO Auger package, 5000 bu/hour, hydraulic winch, overflow relief, new tires	TD261P+	3460#	\$25,229
12" x 71' PTO Auger package, 5000 bu/hour, hydraulic winch, overflow relief, new tires	TD271P+	3550#	\$31,734
14" x 31' HD PTO Auger package, 10000 bu/hour, winch, overflow relief, new tires	TD431P+	2400#	\$21,803

**OPTIONS & OTHER SIZES**

	<b>Stock No</b>	<b>Weight</b>	<b>List</b>
Galvanized auger tube, protects & hardens outside & inside, for 6", 8", 10" augers, ADD about 5%			Call
Other auger lengths, 26-foot to 71-foot, and other options			Call
Caster wheel jack, for easier moving, especially with hopper, with long handle, SPECIFY 10",12",13",14"		100#	\$756
Auger hopper, 17-degree, for 8" auger, exchange for safety cage	007716	182#	\$1,137
Auger hopper, 17-degree, for 10" auger, exchange for safety cage	007718	239#	\$1,867
Auger hopper, 17-degree, for 12" auger, exchange for safety cage	0055825	251#	\$2,148
Auger hopper, 17-degree, for 14" auger, exchange for safety cage	047499	370#	\$2,907
Hydraulic winch kit, exchange for manual winch	005933	62#	\$2,704
Swivel transport carriage, exchange for standard transport, w/4 tires/wheels, for 8", 10", 12"			\$4,297

**FREIGHT:** FOB Wellsville, UT; Free delivery within 200 road miles. Call for delivery rates, Special orders and volume discounts.

**FACTORY WARRANTY:** 1-year on parts and labor, for farm use; with limitations. Travel/hauling excluded.

**ASSEMBLY:** (at Wellsville, UT): Per Sudenga brochure, \$406 to \$841

All orders are also subject to the dealer Sales & Security Agreement, our latest Discounts and Terms, and Credit Approval



Swing-Away Auger, Galvanized



Overflow Relief Spout



Low-Profile Hopper

**SWING-AWAY Augers**

	Stock No	Weight	List
8" x 57' Auger package, 3200 bu/hour, scissor lift, hopper, 540 CV-PTO, jack, tires	HOSS857	2669#	\$15,080
8" x 61' Auger package, 3200 bu/hour, scissor lift, hopper, 540 CV-PTO, jack, tires	HOSS861	2670#	\$15,288
8" x 65' Auger package, 3200 bu/hour, scissor lift, hopper, 540 CV-PTO, jack, tires	HOSS865	2779#	\$16,152
8" x 71' Auger package, 3200 bu/hour, scissor lift, hopper, 540 CV-PTO, jack, tires	HOSS871	2800#	\$16,559
Discharge spout, buckets & chain, 4-foot	008234		\$273
Side drive kit, for 8" auger, ADD	008010		\$1,840
Galvanized auger tube, protectes & hardens outside & inside, for 8" augers, ADD about 4%			Call
10" x 61' Auger package, 7000 bu/hour, scissor lift, hinged hopper, 540 CV-PTO, jack, tires	HOSS1061+	3385#	\$21,970
10" x 66' Auger package, 7000 bu/hour, scissor lift, hinged hopper, 540 CV-PTO, jack, tires	HOSS1066+	4156#	\$23,025
10" x 71' Auger package, 7000 bu/hour, scissor lift, hinged hopper, 540 CV-PTO, jack, tires	HOSS1071+	4220#	\$23,314
10" x 76' Auger package, 7000 bu/hour, scissor lift, hinged hopper, 540 CV-PTO, jack, tires	HOSS1076+	4694#	\$25,361
10" x 81' Auger package, 7000 bu/hour, scissor lift, hinged hopper, 540 CV-PTO, jack, tires	HOSS1081+	4357#	\$30,190
Low-profile hinged twin auger hopper, for 10" auger, ADD	065134		\$1,549
Hopper swing kit, hydraulic drive, motor, hoses, valve, dual drive tires	063969	100#	\$4,798
Side drive kit, for 10" auger, ADD	008011		\$1,840
No-Snag plastic discharge spout, 13" long	040021	24#	\$486
Galvanized auger tube, protectes & hardens outside & inside, for 10" augers, ADD about 5%			Call
13" x 72' Auger package, 11000 bu/hour, scissor lift, hinged low hopper, 540 CV-PTO, jack, tires	HOSS1372+	7393#	\$43,666
13" x 82' Auger package, 11000 bu/hour, scissor lift, hinged low hopper, 540 CV-PTO, jack, tires	HOSS1382+	8069#	\$45,582
13" x 92' Auger package, 11000 bu/hour, scissor lift, hinged low hopper, 540 CV-PTO, jack, tires	HOSS1392+	9750#	\$55,611
13" x 102' Auger package, 11000 bu/hour, scissor lift, hinged low hopper, 540 CV-PTO, jack, tires	HOSS13102+	9841#	\$60,128
13" x 112' Auger package, 11000 bu/hour, scissor lift, hinged low hopper, 540 CV-PTO, jack, tires	HOSS13112+	11274#	\$70,030
Hopper swing kit, hydraulic drive, motor, hoses, valve, dual drive tires	063970		\$5,000
Side drive kit, for 12" auger, ADD	008012		\$2,039
No-Snag plastic discharge spout, 16" long	040022	30#	\$598



**FREIGHT:** FOB Wellsville, UT; Free delivery within 200 road miles. Call for delivery rates, Special orders and volume discounts.  
**FACTORY WARRANTY:** 1-year on parts and labor, for farm use; with limitations. Travel/hauling excluded.  
**ASSEMBLY:** (at Wellsville, UT): 8" \$586; 10" \$740; 13"x72' \$788; 13"x82' \$788; 13"x 92'-112' \$2949  
 All orders are also subject to the dealer Sales & Security Agreement, our latest Discounts and Terms, and Credit Approval

UTILITY AUGERS	Stock No	Weight	List
4" x 11' Galvanized auger, motor mount, belt, pulley, cage intake guard, ADD Spout	850045	68#	\$934
4" x 15' Galvanized auger, motor mount, belt, pulley, cage intake guard, ADD Spout	850045	68#	\$1,075
Spout, 90-degree, for 4"	850152	2#	\$91
4"x 5' Galvanized Auger Extension w/sleeve	850056	61#	\$143
4"x 10' Galvanized Auger Extension w/sleeve	850057	93#	\$201
Delete 4" cage intake guard, DEDUCT	850055	52#	(\$85)
6" x 11' Galvanized auger, motor mount, belt, pulley, cage intake guard, ADD spout	850048	116#	\$1,461
6" x 17' Galvanized auger, motor mount, belt, pulley, cage intake guard, ADD spout	850049	148#	\$1,723
Spout, 90-degree, for 6"	850147	3#	\$133
6" x 5' Galvanized auger extension, w/sleeve	850056	61#	\$545
6" x 10' Galvanized auger extension, w/sleeve	850057	93#	\$742
Delete 6" cage intake guard, DEDUCT			(\$150)
8" Galvanized auger, motor mount, belt, pulley, cage intake guard, ADD spout			Call
Commercial-duty augers and accessories, 6", 8", 10", 12"			Call



ELECTRIC MOTORS- Add for Pulley	Stock No	Weight	List
1/2 hp single phase, Baldor motor, 5/8" shaft	EM150002	28#	\$592
1 hp single phase, Baldor motor, 5/8" shaft (3/4 hp is the same price)	EM150004	40#	\$809
1.5 hp single phase, Baldor motor, 5/8" shaft	EM150005	49#	\$966
2 hp single phase, Baldor motor, 1 1/8" shaft	EM150006	66#	\$1,364
3 hp single phase, Baldor motor, 1 1/8" shaft	EM150007	98#	\$1,633
5 hp single phase, Baldor motor, 1 1/8" shaft	EM150008	102#	\$1,874
7.5 hp single phase, Baldor motor, 1 3/8" shaft	EM150009	142#	\$2,651
10 hp single phase, Baldor motor, 1 3/8" shaft	EM150156	160#	\$3,750
1 hp 3-phase, Toshiba motor, 7/8" shaft	EM150575	58#	\$663
1.5 hp 3-phase, Toshiba motor, 7/8" shaft	EM150576	60#	\$742
2 hp 3-phase, Toshiba motor, 7/8" shaft	EM150577	62#	\$805
3 hp 3-phase, Toshiba motor, 1 1/8" shaft	EM150578	99#	\$910
5 hp 3-phase, Toshiba motor, 1 1/8" shaft	EM150573	110#	\$1,035
7.5 hp 3-phase, Toshiba motor, 1 3/8" shaft	EM150579	186#	\$1,481
10 hp 3-phase, Toshiba motor, 1 3/8" shaft	EM150574	203#	\$1,804
15 hp 3-phase, Toshiba motor, 1 5/8" shaft	EM150580	315#	\$2,434
20 hp 3-phase, Toshiba motor, 1 5/8" shaft	EM150581	355#	\$3,212
25 hp 3-phase, Toshiba motor, 1 7/8" shaft	EM150582	492#	\$4,252
30 hp 3-phase, Toshiba motor, 1 7/8" shaft	EM150583	531#	\$5,385
40 hp 3-phase, Toshiba motor, 2 1/8" shaft	EM150584	669#	\$6,969
Motor pulley, single belt, CHOOSE 5/8" - 1 1/8" bore, (8" utility auger takes 2 pulleys)			\$35
Motor pulley with bushing, CHOOSE 5/8" - 1 5/8" bore, CHOOSE 2, 3, or 4 grooves			\$170



**FREIGHT:** FOB Wellsville, UT; Call for delivery rate, special orders and volume discounts  
**FACTORY WARRANTY:** 1-year on parts and labor, for farm use; with limitations. Travel/hauling excluded.  
 All orders are also subject to the dealer Sales & Security Agreement, our latest Discounts and Terms, and Credit Approval



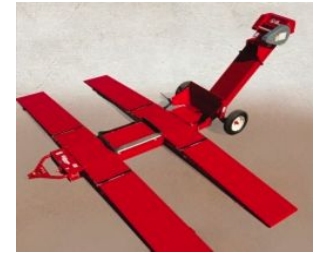
Truck Hopper +



Belt Transfer Hopper



Railcar Hopper



Drive-Over Hopper

**TRUCK HOPPER/AUGER, Hydraulic Drive**

	Stock No	Weight	List
8" x 6' auger package, 2500 bu/hour, 10.75" high hopper, 25" discharge height, transport, hydr motor	138H+	253#	\$3,227
8" x 8' auger package, 2500 bu/hour, 10.75" high hopper, 36" discharge height, transport, hydr motor	238H+	273#	\$3,290
10" x 6' auger package, 4500 bu/hour, 13" high hopper, 25" discharge height, transport, hydr motor	106H+	398#	\$4,071
10" x 8' auger package, 4500 bu/hour, 13" high hopper, 36" discharge height, transport, hydr motor	108H+	438#	\$4,192
12" x 8' auger package, 6500 bu/hour, 13" high hopper, 34" discharge height, transport, hydr motor	212H+	503#	\$5,617

**TRUCK HOPPER/AUGER, Electric Drive**

	Stock No	Weight	List
8" x 6' auger package, 2500 bu/hour, 10.75" high hopper, 25" disch height, transport, ADD 2hp motor	118E+	322#	\$2,709
8" x 8' auger package, 2500 bu/hour, 10.75" high hopper, 36" disch height, transport, ADD 2hp motor	218E+	347#	\$2,839
10" x 6' auger package, 4500 bu/hour, 13" high hopper, 25" disch height, transport, ADD 3hp motor	106E+	401#	\$3,946
10" x 8' auger package, 4500 bu/hour, 13" high hopper, 36" disch height, transport, ADD 3hp motor	108E+	441#	\$4,060
12" x 8' auger package, 6500 bu/hour, 13" high hopper, 34" disch height, transport, ADD 5hp motor	212E+	507#	\$6,009

**BELT TRANSFER HOPPER**

	Stock No	Weight	List
12"x15' conveyor, electric drive, 14" belt, 8"x32"x48" hopper, 31"-38" disch, tires, add 5-7.5hp motor	039853	580#	\$7,997
12"x15' conveyor, as above but with hydraulic drive package and hydraulic motor	039854	592#	\$8,763

**ULTRA-LOW RAILCAR UNLOADING HOPPER, Electric Drive**

	Stock No	Weight	List
8" x 7' Incline, 40 tons/hour, 4.75" high hopper, 25" disch height, transport, ADD 5hp motor	FH-500		\$5,705
8" x 9' Incline, 40 tons/hour, 4.75" high hopper, 35" disch height, transport, ADD 7.5hp motor	FH-510-9		\$6,753
8" x 10' Incline, 40 tons/hour, 4.75" high hopper, 40" disch height, transport, ADD 10hp motor	FH-510-10		\$6,980

**PORTABLE CHAIN/PADDLE DRIVE-OVER HOPPER**

	Stock No	Weight	List
24" Electric Package, 7500 bu/hr, 9.75" high hopper, 27" disch, electric drive, manual jacks, tires	57507E+	3620#	\$27,783
24" Hydraulic Package, 7500 bu/hr, 9.75" high hopper, 27" disch, var speed drive, manual jacks, tires	57507H+	3620#	\$28,079
3-Foot incline extension, for 51" discharge height	057640		\$1,417
5-Foot incline extension, for 68" discharge height	057642		\$2,060
Hydraulic transport lift kit, ADD	057707		\$1,633
40" Hydraulic package, 12500 bu/hr, 9.75" high hopper, 38" disch, var speed drive, hydr jacks, tires	058378+	5262#	\$52,433
40" Electric package, 12500 bu/hr, 9.75" high hopper, 38" disch, jack, ADD 20hp motor	0508378E+	5475#	\$55,675
3-Foot incline extension, for 63" discharge height	058328		\$2,137
5-Foot incline extension, for 80" discharge height	058330		\$3,388
Electric/hydraulic drive package, on a skid, 30hp motor, speed control, reservoir/filter, ADD oil	058511		\$22,447

**FREIGHT:** FOB Wellsville, UT; Free delivery within 200 road miles. Call for delivery rates, special orders and volume discounts

**FACTORY WARRANTY:** 1-year on parts and labor, for farm use; with limitations. Travel/hauling excluded.

All orders are also subject to the dealer Sales & Security Agreement, our latest Discounts and Terms, and Credit Approval



Tilt/Offset Rear Blade



HD Box Scraper



Pasture Renovator

### REAR BLADES

- 4' SLIDER, pin-set angle, slider tilt & offset, reversible edge, up to 30 hp
- 5' SLIDER, pin-set angle, slider tilt & offset, reversible edge, up to 30 hp
- 6' SLIDER, pin-set angle, slider tilt & offset, reversible edge, up to 30 hp
- 7' SLIDER, pin-set angle, slider tilt & offset, reversible edge, up to 30 hp



- 6' TILT/OFFSET, 3-position angle & tilt, slider offset, reversible edge, up to 45 hp
- 7' TILT/OFFSET, 3-position angle & tilt, slider offset, reversible edge, up to 45 hp



- 5' OFFSET BLADE, pin-set angle, tilt & offset, reversible edge, up to 45 hp
- 6' OFFSET BLADE, pin-set angle, tilt & offset, reversible edge, up to 45 hp
- 7' OFFSET BLADE, pin-set angle, tilt & offset, reversible edge, up to 45 hp

- 6' HD BLADE, pin-set angle & tilt, mech link offset, reversible edge, 17" moldboard, up to 70 hp
- 7' HD BLADE, pin-set angle & tilt, mech link offset, reversible edge, 17" moldboard, up to 70 hp
- 8' HD BLADE, pin-set angle & tilt, mech link offset, reversible edge, 17" moldboard, up to 70 hp

Stock No	Weight	List
RB48	160#	\$613
RB60	180#	\$661
RB72	230#	\$745
RB84	250#	\$790
RBT72	280#	\$956
RBT84	305#	\$990
RBO60	290#	\$1,063
RBO72	315#	\$1,105
RBO84	340#	\$1,198
RBHD72	430#	\$1,879
RBHD84	460#	\$1,977
RBHD96	490#	\$2,127

### BOX SCRAPERS

- 4' LOW PROFILE, 14"x20"x3/16" sides, 3/16" back, 2 reversible edges, 3 shanks
- 5' LOW PROFILE, 14"x20"x3/16" sides, 3/16" back, 2 reversible edges, 4 shanks
- 5.5' LOW PROFILE, 14"x20"x3/16" sides, 3/16" back, 2 reversible edges, 4 shanks
- 6' LOW PROFILE, 14"x20"x3/16" sides, 3/16" back, 2 reversible edges, 5 shanks
- 7' LOW PROFILE, 14"x20"x3/16" sides, 3/16" back, 2 reversible edges, 6 shanks
- 8' LOW PROFILE, 14"x20"x3/16" sides, 3/16" back, 2 reversible edges, 7 shanks



HEAVY-DUTY box scraper version, reinforced clevis hitch, 16"x24"x1/4" sides, 3/16" back, ADD

Stock No	Weight	List
BS48LP	290#	\$1,004
BS60LP	340#	\$1,103
BS66LP	430#	\$1,195
BS72LP	460#	\$1,294
BS84LP	520#	\$1,381
BS96LP	570#	\$1,480
BSxxC	40#	\$197

### LANDSCAPE RAKES

- 4' RAKE, 5-position angle front & rear, 1" tempered tines, 1" spacing
- 5' RAKE, 5-position angle front & rear, 1" tempered tines, 1" spacing
- 6' RAKE, 5-position angle front & rear, 1" tempered tines, 1" spacing
- 7' RAKE, 5-position angle front & rear, 1" tempered tines, 1" spacing
- 8' RAKE, 5-position angle front & rear, 1" tempered tines, 1" spacing



HEAVY-DUTY landscape rake version, reinforced tine bar, ADD

Stock No	Weight	List
LR48	150#	\$872
LR60	170#	\$956
LR72	215#	\$1,080
LR84	235#	\$1,201
LR96	260#	\$1,302
LRxxH	30#	\$132

### PASTURE RENOVATOR

- 5-SHANK renovator
- 6-SHANK renovator
- 7-SHANK renovator

Stock No	Weight	List
PR5	180#	\$743
PR6	200#	\$810
PR7	220#	\$875

**FREIGHT:** FOB Decatur, TN 37322. Single item rate \$300+.30/lb. Qty rate 6000 lb \$1.00/mile; 12000 lb \$1.70/mi; 24000 lb \$2.50/mi.

**FACTORY WARRANTY:** 3 Months on parts and pre-approved labor; with limitations

All orders are also subject to the dealer Sales & Security Agreement, our latest Discounts and Terms, and Credit Approval



Standard Cutter



Medium Cutter



Heavy Pull-Type Cutter

### ROTARY CUTTERS- Single Rotor, Shear Bolt

- 3.5' STANDARD, 11-gauge top, 6" channel sides, 40 hp gearbox, shear bolt, lam tire
- 4' STANDARD, 11-gauge top, 6" channel sides, 40 hp gearbox, shear bolt, lam tire
- 5' STANDARD, 11-gauge top, 6" channel sides, 40 hp gearbox, shear bolt, lam tire
- 6' STANDARD, 11-gauge top, 6" channel sides, 40 hp gearbox, shear bolt, lam tire
  
- 5' MEDIUM, 11-gauge top, HD 6" channel sides, 40hp gearbox, shear bolt, lam tire
- 6' MEDIUM, 11-gauge top, HD 6" channel sides, 40hp gearbox, shear bolt, lam tire
- 7' MEDIUM, 11-gauge top, HD 6" channel sides, 40hp gearbox, shear bolt, lam tire

Stock No	Weight	List
L400	370#	\$1,890
L440	430#	\$1,947
L540	520#	\$2,025
L640	680#	\$2,307
M540	620#	\$2,287
M640	708#	\$2,484
M740	864#	\$3,249

### ROTARY CUTTERS- Single Rotor, Slip Clutch

- 5' STANDARD, 11-gauge top, 6" channel sides, 40 hp gearbox, slip clutch, lam tire
- 6' STANDARD, 11-gauge top, 6" channel sides, 40 hp gearbox, slip clutch, lam tire
  
- 5' MEDIUM, 11-gauge top, HD 6" channel sides, 90hp gearbox, slip clutch, lam tire
- 6' MEDIUM, 11-gauge top, HD 6" channel sides, 90hp gearbox, slip clutch, lam tire
- 7' MEDIUM, 11-gauge top, HD 6" channel sides, 90hp gearbox, slip clutch, lam tire
  
- 6' HEAVY, 7-gauge top, HD 8" channel sides, 90hp gearbox, slip clutch, 1 lam tire
- 6' HEAVY, 7-gauge top, HD 8" channel sides, 90hp gearbox, slip clutch, 2 lam tires
- 7' HEAVY, 7-gauge top, HD 8" channel sides, 90hp gearbox, slip clutch, 2 lam tires

Stock No	Weight	List
L540SC	645#	\$2,354
L640SC	733#	\$2,636
M590	680#	\$2,880
M690	768#	\$3,128
M790	910#	\$4,051
H691	916#	\$4,051
H692	996#	\$4,459
H790	1285#	\$5,288

### ROTARY CUTTERS- Twin Rotors

- 8' HEAVY, 7-ga top, HD 8" channel sides, 100/90hp gearboxes, slip clutch, two lam tires
- 10' HEAVY, 7-ga top, HD 8" channel sides, 100/90hp gearboxes, slip clutch, two lam tires
  
- 7' PULL TYPE, 7-ga top, HD 8" channel sides, 90hp gearbox, slip clutch, cylinder, hoses, tires
- 8' PULL TYPE, 7-ga top, HD 8" channel sides, 100/90hp gearboxes, slip clutch, cylinder, hoses, tires
- 10' PULL TYPE, 7-ga top, HD 8" channel sides, CV-PTO driveline, slip clutch, cylinder, hoses, tires

Stock No	Weight	List
H800	1364#	\$7,525
H1000	1575#	\$8,129
HP790	1487#	\$7,075
HP800	1596#	\$10,436
HP1000	1882#	\$11,533

Chain guards, one set for front and rear, ADD per foot of cutter width

\$90

### DISC HARROW

- 5'6" Disc, 16 x 18" discs, 7.5" spacing, 1" square bar
- 6'6" Disc, 20 x 18" discs, 7.5" spacing, 1" square bar
- 7'6" Disc, 24 x 18" discs, 7.5" spacing, 1" square bar



Stock No	Weight	List
550	586#	\$2,757
650	662#	\$3,347
750	738#	\$3,769

**FREIGHT:** FOB Decatur, TN 37322. Single item rate \$300+.30/lb. Qty rate 6000 lb \$1.00/mile; 12000 lb \$1.70/mi; 24000 lb \$2.50/mi.

**FACTORY WARRANTY:** 3 Months on parts and pre-approved labor; with limitations

All orders are also subject to the dealer Sales & Security Agreement, our latest Discounts and Terms, and Credit Approval





BX36S 3.5"



BX52S 5"



BX102R 10"



REALTREE EDGE Camo Option

## CHIPPERS, 3-Point, Standard Hopper

	Stock No	Weight	List
BX36S Chipper, 3.5" capacity, 540 PTO, Cat I hitch, 25" rotor, 4 knives, for 12-30 hp	BX36S	395#	\$4,040
BX52S Chipper, 5" capacity, 540 PTO, Cat I hitch, 25" rotor, 4 knives, bed knife, for 18-50 hp	BX52S	505#	\$5,080
BX72S Chipper, 7" capacity, 540 PTO, Cat I-II hitch, 4 knives, bed knife, for 30-100hp	BX72S	728#	\$7,100
BX102S Chipper, 10" capacity, 540 PTO, Cat II hitch, 4 knives, bed knife, for 65-150hp	BX102S	1143#	\$10,160

## CHIPPERS, 3-Point, Dual Hydraulic Roller Hopper

	Stock No	Weight	List
BX52R Chipper, 5" capacity, 540 PTO, Cat I hitch, 4 knives, bed knife, for 18-50 hp	BX52R	845#	\$8,980
BX52RI Chipper, as BX52R above, but with Intellifeed auto control	BX52RI	850#	\$11,510
BX72R Chipper, 7" capacity, 540 PTO, Cat I-II hitch, 4 knives, bed knife, for 40-80 hp	BX72R	1300#	\$13,120
BX72RI Chipper, as BX72R above, but with Intellifeed auto control	BX72RI	1310#	\$15,600
BX102R Chipper, 10" capacity, 540 PTO, Cat II hitch, 4 knives, bed knife, for 65-150hp	BX102R	1945#	\$16,590
BX102RI Chipper, as BX102R above, but with Intellifeed auto control	BX102RI	2000#	\$19,070
BX102RPI Chipper, as BX102RP above, but with Intellifeed auto control	BX102RPI	2200#	\$22,290

## CHIPPER-SHREDDERS, 3-Point

	Stock No	Weight	List
BXM32 Chipper-Shredder, 3" chipping, 1" shredding, pivoting blower, 540 PTO, Cat I, for 12-35hp	BXM32	445#	\$5,180
BXM42 Chipper-Shredder, 4" chipping, 2" shredding, pivoting blower, 540 PTO, Cat I, for 30-90hp	BXM42	800#	\$7,070

## CHIPPER, Skid Steer, Hydraulic

	Stock No	Weight	List
BXH42 Chipper, 4" capacity, hydraulic drive, 2 knives, bed knife, standard hopper, for 20-25 gpm	BXH42	740#	\$9,130

## OPTIONS

	Stock No	Weight	List
Trailer hitch, for all BXC and BXMC models	1082A355		\$225
Mulch collector bag, for BXC and BXMC34B	Z99006		\$270
Discharge height extension, 30", for BX72S, BX72R, BX102S, BX102R	CHE100		\$695
Biomass kit, for finer chips for furnaces, for BX72R, BX72RI	CBM100		\$510
Biomass kit, for finer chips for furnaces, for BX102R, BX102RI, BX102RP, BX102RPI	CBM200		\$550
REALTREE EDGE camo color, special order, ADD			\$300

**FREIGHT:** Freight BX36 & BX52 \$900; BX72 \$1,200; BX102 \$1,500; BXH \$900

**FACTORY WARRANTY:** 5 Year consumer, 2 Year commercial; pre-approved dealer labor only; with limitations

All orders are also subject to the dealer Sales & Security Agreement, our latest Discounts and Terms, and Credit Approval



BXT36S 3.5" Capacity



BXT52S 5" Capacity



BXT72S 7" Capacity

### CHIPPERS, Trailed

BXT36S Chipper, 3.5" capacity, 14 hp Vanguard engine, electric start, clutch, 2" ball  
 BXT52S Chipper, 5" capacity, 23 hp Vanguard engine, electric start, clutch, 2" ball  
 BXT72S Chipper, 7" capacity, 40 hp Vanguard engine, electric start, clutch, 2" ball

Stock No	Weight	List
BXT36S	773#	\$5,990
BXT52S	1035#	\$9,380
BXT72S	1464#	\$13,630



BXMC3409B



BXMT32G



BXTR5224



BXTR6438B Commercial 7"

### CHIPPER-SHREDDERS, Push Cart

BXMC3409B Chipper-Shredder, 3" chipping, 3/4" shredding, blower discharge

Stock No	Weight	List
BXMC3409B Bundle	295#	\$4,720

### CHIPPER-SHREDDERS, Trailed

BXMT32G Chipper-Shredder, 3" chipping, 1" shredding, clutch, 14 hp Vanguard, electric start

Stock No	Weight	List
BXMT32G	500#	\$4,830

### P3 CHIPPERS, Trailed

BXTR5224 Commercial Chipper, 5" capacity, 24hp Honda GX690 engine, dual rollers, P3 Intellifeed w/auto-reverse, fuel tank, road lights, 2" ball hitch, fenders, torsion axles, hour meter, safety chains

Stock No	Weight	List
BXTR5224	1425#	\$20,990
BXTR6438	2225#	\$30,990
BXTR6438B	2250#	\$31,620

BXTR6438 Commercial Chipper, 7" capacity, 35hp Kohler engine, dual rollers, P3 Intellifeed w/auto-reverse, fuel tank, road lights, 2" ball hitch, fenders, torsion axles, hour meter, safety chains

BXTR6438B Commercial Chipper, as BXTR6438F but with electric brakes and fluid clutch

### REAL TREE EDGE CAMO, any chipper, special order, ADD

\$300

**FREIGHT:** Freight on BXT36S \$600, BXT52S \$900, BXT72S \$1,450 P3 models \$2,000; Push Cart \$500;

**FACTORY WARRANTY:** 5 Year consumer, 2 Year commercial; pre-approved dealer labor only; with limitations

All orders are also subject to the dealer Sales & Security Agreement, our latest Discounts and Terms, and Credit Approval



LOG WINCH- Steel Cable	Stock No	Weight	List
FX40 4000# Winch, Cat 1 hitch, 165' 3/8" cable, 540 PTO, 15-30 hp	FX40	280#	\$4,330
FX85 8500# Winch, Cat 1-2 hitch, 165' 3/8" cable, 2 sliders, shield, drawbar, 540 PTO, 30-60 hp	FX85	470#	\$5,710
FX110 11000# Winch, Cat 1-2 hitch, 165' 7/16" cable, 2 sliders, shield, drawbar, 540 PTO, 45-100 hp	FX110	796#	\$6,710
FX140 14000# Winch, Cat 1-2 hitch, 165' 1/2" cable, 2 sliders, shield, drawbar, 540 PTO, 80-120 hp	FX140	898#	\$7,840
FX85R 8500# Winch, Cat 1-2 hitch, 165' 3/8" cable, Remote, shield, drawbar, sliders, 540 PTO 30-55 hp	FX85R	470#	\$8,130
FX110R 11000# Winch, Cat 1-2 hitch, 165' 1/2" cable, remote, shield, drawbar, 2 sliders, 540 PTO 50-90 hp	FX110R	796#	\$9,230
FX140R 14000# Winch, Cat 1-2 hitch, 165' 1/2" cable, remote, 2 sliders, shield, drawbar, 540 PTO, 80-120 hp	FX140	898#	\$10,260
Self-releasing directional pulley	5089A100	25#	\$595
Extra 90" Choker chain, with sliding hook	Z92318	12#	\$135
Chainsaw holder, nylon, for FX66-FX140	P100		\$155

LOG WINCH- Synthetic Rope	Stock No	Weight	List
FX85S 8500# Winch, Cat 1-2 hitch, 200' synthetic rope, 2 sliders, shield, drawbar, 540 PTO, 30-60 hp	FX85S	470#	\$6,700
FX110S 11000# Winch, Cat 1-2 hitch, 200' synthetic rope, 2 sliders, shield, drawbar, 540 PTO, 45-100 hp	FX110S	796#	\$7,670
FX140S 14000# Winch, Cat 1-2 hitch, 200' synthetic rope, 2 sliders, shield, drawbar, 540 PTO, 80-120 hp	FX140S	898#	\$8,840
FX85RS 8500# Winch, Cat 1-2 hitch, 200' synthetic rope, remote, shield, drawbar, 2 sliders 540 PTO 30-55hp	FX85RS	470#	\$9,130
FX110RS 11000# Winch, Cat 1-2 hitch, 200' synthetic rope, remote, 2 sliders, shield, drawbar, 540 PTO, 45-100 hp	FX110RS	796#	\$10,220
FX140RS 14000# Winch, Cat 1-2 hitch, 200' synthetic rope, remote, 2 sliders, shield, drawbar, 540 PTO, 80-120 hp	FX140RS	898#	\$11,240

LOG SKIDDING PLATE	Stock No	Weight	List
FXP20 3-Point Skidding Plate, Cat 1	FXP20	120#	\$2,310
FXP30 3-Point Skidding Plate, Cat 2	FXP30	340#	\$2,770

LOG GRAPPLE- 3-Point	Stock No	Weight	List
LXG320S Grapple, opens 48", 3000# cap, 180-deg free pivoting, spring-centered, for 20-60 hp	LXG320S	350#	\$5,220
LXG320R Grapple, opens 48", 3000# cap, hydraulic rotator, for 25-65 hp	LXG320R	353#	\$5,760
LXG330S Grapple, opens 72", 4500# cap, 180-deg free pivoting, spring-centered, for 60-180 hp	LXG330S	836#	\$9,510
LXG330R Grapple, opens 72", 4500# cap, hydraulic rotator, for 60-180 hp	LXG330R	888#	\$11,460
LXG330RP 24" Extendible w/9000# winch, 100' syn cable, 3000#-4500# cap, hyd rotator, for 60-180 hp	LXG330RP	1229#	\$18,400

LOG GRAPPLE- Skid Steer	Stock No	Weight	List
LXG210S Mini-skid steer grapple, opens 40", 1000#cap 180-deg free pivoting, spring-centered	LXG210S	285#	\$4,710
LXG210SB Mini-skid steer grapple, as above, but fits Bobcat loaders	LXG210SB	343#	\$4,710
LX5200 Grapple, opens 44", 1500# cap 180-deg free pivoting, spring-centered, log cradle, <b>1 ONLY</b>	LX5200	477#	\$3,350
LXG420S Grapple, opens 48", 3000# cap 180-deg free pivoting, spring-centered, log cradle, for 30-70hp	LXG420S	560#	\$6,330
LXG420R Grapple, opens 48", 3000# cap, hydraulic pivoting, diverter valve, log cradle, for 30-70 hp	LXG420R	588#	\$8,250
LXG430S Grapple, opens 72", 4500# cap, 180-deg free pivoting, spring-centered, for 70-100 hp	LXG430S	1050#	\$10,710
LXG430R Grapple, opens 72", 4500# cap, hydraulic rotator, for 70-100 hp	LXG430R	1124#	\$12,600
LXG430RP 24" Extendible w/9000# winch, 100' syn cable, 3000#-4500# cap, hyd rotator, for 70-100hp	LXG430RP	1444#	\$19,960

LOG GRAPPLE- EXCAVATOR	Stock No	Weight	List
LXG520R 48" Excavator grapple, 6750# cap, 360-deg hyd rotator, blank ear plate, 5gpm for 2.5-6 ton	LXG520R	345#	\$6,880

**FREIGHT:** Freight on winches \$1,000; Freight on Log Grapples \$1,000  
**FACTORY WARRANTY:** 5 Year consumer, 2 Year commercial; pre-approved dealer labor only; with limitations  
 All orders are also subject to the dealer Sales & Security Agreement, our latest Discounts and Terms, and Credit Approval



WP245



WP525



WP1624 + 8' Conveyor + Hyd Log Lifter

### FIREWOOD PROCESSOR

WP245 3-Point, 25-ton, 24" cylinder, hydraulic winch, 4-way wedge  
 WP275 3-Point, 25-ton, 36" cylinder, hydraulic winch, 4-way wedge

Stock No	Weight	List
WP245	1614#	\$14,470
WP275	1785#	\$16,730

WP525, trailed, 20-ton 23" cyl, 16" max diameter, 3-way wedge, 6.5 hp Vanguard

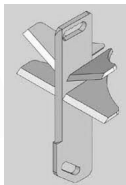
WP525	1525#	\$13,680
-------	-------	----------

WP845, trailed, 25-ton 24" cyl, 8.3-second cycle, 13 hp Honda, 4-way wedge, torsion axle, lights, 2" ball

WP840	2035#	\$18,160
-------	-------	----------

WP875, trailed, 25-ton 36" cyl, 12.1-second cycle, 13 hp Honda, elect start, torsion axle, lights, 2" ball

WP870	2273#	\$20,190
-------	-------	----------



Pivoting chainsaw holder  
 Chainsaw adapter, for a 2nd saw  
 48" Log Peavey  
 6-Way wedge, for current models  
 60" Log winching strap  
 REALTREE EDGE camo, special order, ADD

P202		\$920
P211		\$210
Z99001	8#	\$200
P601	64#	\$985
Z92405	2#	\$41
		\$300

### FIREWOOD PROCESSOR- Live Deck Feed

WP1624, trailed, live deck infeed, 20-ton, 18" dia, Oregon 25" saw bar, folding deck

Stock No	Weight	List
WP1624	3700#	\$50,930

WP1624-12, trailed, live deck infeed, 20-ton, 18" dia, Oregon 25" saw bar, 12' folding deck

WP1624-12	3700#	\$56,550
-----------	-------	----------

WP1624-24, trailed, live deck infeed, 20-ton, 18" dia, Oregon 25" saw bar, 24' folding deck

WP1624-24	3700#	\$58,930
-----------	-------	----------



### FIREWOOD CONVEYORS

CT16B 16' Self Contained firewood conveyor, towable, 118CC Honda Motor

CT16B	880#	\$8,690
-------	------	---------

CT24B 24' Self Contained firewood conveyor, towable, 118CC Honda Motor

CT24B	1040#	\$9,620
-------	-------	---------

2" Ball hitch for 16' and 24' models

T200		\$67
------	--	------



CT16B Firewood Conveyor



CT24 Firewood Conveyor

**FREIGHT:** Freight on WP245, WP275, WP840, WP870 \$1,500; Freight for WP525 \$1,100; WP1624 \$3,200; CT MODELS \$2,000

**FACTORY WARRANTY:** 5 Year consumer, 2 Year commercial; pre-approved dealer labor only; with limitations

All orders are also subject to the dealer Sales & Security Agreement, our latest Discounts and Terms, and Credit Approval



LXT95



LXT115



Dump Box + Bucket kit



Flabed Kit + Post Auger Kit

### LOG TRAILERS

LXT95 9'6" Boom, 5000# capacity, grapple, rotator, valves, stabilizers, surge brakes.

LXT115 11'6" Boom, 11500# capacity, highway trailer, towable self contained

Winch Kit for LXT95 boom, mounts to top of boom  
Winch Kit for LXT115 boom, mounts to top of boom

Dump Box Kit, 1 yard capacity, for all LXT95 models  
Dump Box Kit, 1.5 yard capacity, for all LXT115 models

Flatbed Kit, expanded metal deck, 9' x 5', for LXT95 model  
Flatbed Kit, expanded metal deck, 10'6" x 5'8", for LXT115 model

9" Bucket Kit, fits on boom for LXT95 and LXT115  
12" Bucket Kit, fits on boom for LXT95 and LXT115  
15" Bucket Kit, fits on boom for LXT95 and LXT115  
18" Bucket Kit, fits on boom for LXT95 and LXT115

6" Post Auger, fits on grapple rotator, for all LXT95 and LXT115 trailers  
9" Post Auger, fits on grapple rotator, for all LXT95 and LXT115 booms

Pintle Hitch Kit, for all trailers

### Stock No Weight List

LXT95	1650#	\$22,490
LXT115	2470#	\$27,150
L1400		\$2,680
L3200		\$2,805
L310	270#	\$2,100
L620	355#	\$2,570
L330	4203#	\$2,745
L630	570#	\$3,250
LB09		\$1,380
LB12		\$1,430
LB15		\$1,490
LB18		\$1,550
LA610	55#	\$790
LA910	80#	\$920
L640	17#	\$540



MX25G Spreader



MX80P Spreader



Optional REAL TREE EDGE Camo



MX130P Spreader

### MANURE SPREADERS

25-Bushel, ground drive, 3-speed unload, full frame, poly floor, 6.0x12 tires  
50-Bushel, ground drive, 3-speed unload, full frame, poly floor, 7.6x15 tires, jack stand  
80-Bushel, ground drive, 3-speed unload, full frame, poly floor, 7.6x15 tires, jack stand  
  
50-Bushel, 540 PTO drive, 3-speed unload, full frame, poly floor, 7.6x15 tires, jack stand  
80-Bushel, 540 PTO drive, 3-speed unload, full frame, poly floor, 7.6x15 tires, jack stand  
  
130-Bushel, 540 PTO drive, 3-speed unload, full frame, poly floor, 11L15 tires, jack, for 45-75 hp

### Stock No Weight List

MX25G	510#	\$5,390
MX50G	795#	\$7,750
MX80G	920#	\$8,460
MX50P	795#	\$7,710
MX80P	920#	\$8,460
MX130P	2180#	\$18,860
M7570		\$820
M7580		\$870
M7630		\$2,225
M7640		\$1,685
		CALL
		\$300

End gate, for MX50G, MX50P, dealer installed  
End gate, for MX80G, MX80P, dealer installed  
End gate, hydraulic, for MX130P, dealer installed  
Top beater, for MX130, dealer installed  
Fines pan, fits under the beater, for all models  
REALTREE EDGE camo, special order, ADD

**FREIGHT:** Freight for LXT models \$3,000; Freight for Spreaders \$1,000

**FACTORY WARRANTY:** 5 Year consumer, 2 Year commercial; pre-approved dealer labor only; with limitations

All orders are also subject to the dealer Sales & Security Agreement, our latest Discounts and Terms, and Credit Approval



GE605



GX720



GX920XT



QC620



## BACKHOES

	Stock No	Weight	List
GE605, 6'4" depth, 8'4" reach, joysticks, hoses/tips, for 12-28hp tractor, ADD bucket & mount Seat kit, for GE605	GE605 BT7250	500#	\$8,050 \$665
GX620, 6'4" depth, 8'4" reach, joysticks, hoses/tips, for 18-30hp tractor, ADD bucket & mount	GX620	575#	\$9,200
GX720, 7'8" depth, 10'2" reach, joysticks, hoses/tips, for 22-45hp tractor, ADD bucket & mount	GX720	765#	\$10,810
GX920, 9'4" depth, 11'7" reach, joysticks, hoses/tips, for 45-100hp tractor, ADD bucket & mount	GX920	791#	\$12,770
GX920XT, 11'4" depth, 13'7" reach, joysticks, hoses/tips, for 45-100hp tractor, ADD bkt & mount	GX920XT	980#	\$15,010
QC620 6' Skid Digger, greasable bushings, skid steer mount, flat couplers, ADD bucket	QC620	375#	\$3,850

## BUCKETS & THUMBS

	Stock No	Weight	List
9" Bucket, 3 teeth, for GE605/GX620	BK2609	37#	\$645
12" Bucket, 3 teeth, for GE605/ GX620	BK2612	43#	\$685
15" Bucket, 4 teeth, for GE605/GX620	BK2615	50#	\$740
18" Bucket, 4 teeth, for GX620	BK2618	54#	\$765
9" Bucket, 3 teeth, AR400 steel, for QC620, GX720, GX920, GX920XT	BK2900	54#	\$870
12" Bucket, 3 teeth, AR400 steel, for QC620, GX720, GX920, GX920XT	BK2120	65#	\$890
15" Bucket, 4 teeth, AR400 steel, for QC620, GX720, GX920, GX920XT	BK2150	74#	\$965
18" Bucket, 4 teeth, AR400 steel, for QC620, GX720, GX920, GX920XT	BK2180	81#	\$1,010
24" Bucket, 5 teeth, AR400 steel, for QC620, GX720, GX920, GX920XT	BK2240	99#	\$1,175
24" Ditch Bucket, no teeth, for QC620, GX720, GX920, GX920XT	BK2240D	90#	\$1,080
36" Ditch Bucket, no teeth, for GX720, GX920, GX920XT	BK2360	115#	\$1,300
Thumb, clamp-on, GE605/GX620, mechanical adjustment	BT5280	33#	\$675
Thumb, clamp-on, GX720/GX920, mechanical adjustment	BT5290	49#	\$805
Thumb, clamp-on, GX920XT, mechanical adjustment	BT5330	49#	\$805
Thumb, clamp-on, QC620, mechanical adjustment	BT5310	49#	\$805
Thumb, weld-on, universal flat plate, 5-position mechanical adjustment	BT5250	45#	\$915
Thumb, clamp-on, <b>Kubota</b> BX22/BX23/BX24/BX25, 5-position mechanical adjustment	BT5230	40#	\$710
Thumbs to fit <b>Kioto</b> 2475,2485,SB2410, <b>John Deere</b> 260, <b>Massey</b> CB05,CB65			\$805

Street Pad Kit, Rubber, Bolt on insert, GX620 use BP210 \$295, GE605 use BP220 \$395, GX720,920,920XT Use BP230 \$300

## MOUNTS & PUMP KITS

	Stock No	Weight	List
Mount, Cat I 3-point hitch, rigid mount, plus drawbar turnbuckle tie-down, for all except GE605	PT302	142#	\$945
Mount, Cat II 3-point hitch, rigid mount, plus drawbar turnbuckle tie-down, for GX720/900/920	PT322	194#	\$1,055
Mount, Tractor Subframe, quick-attach (see separate tractor list)	SFxxx	200#-325#	\$1,835
Mount, Skid Loader, quick-attach w/boom lock brackets, flat couplers, with tieback	SQ500	255#	\$1,835
PTO hydraulic system, pump, reservoir, 540 rpm, 7 gpm, for GE605	PTO605	52#	\$1,770
PTO hydraulic system, pump, reservoir, 540 rpm, 7 gpm, for GX620	PTO62	52#	\$1,835
PTO hydraulic system, pump, reservoir, 540 rpm, 7 gpm, for GX720/GX920	PTO72	54#	\$1,835

**FREIGHT:** Freight on all Backhoes \$1,200

**FACTORY WARRANTY:** 5 Year consumer, 2 Year commercial; pre-approved dealer labor only; with limitations

All orders are also subject to the dealer Sales & Security Agreement, our latest Discounts and Terms, and Credit Approval



WX310 / WX410



WX540



WXR720+ Folding Shelf



WX950 w/Lift

## SPLITTERS, 3-Point Mounted

	Stock No	Weight	List
3-Point, horizontal, 4"x24" cyl, 20-ton, w/hoses & tips, auto return, open center	WX310	220#	\$2,270
3-Point horizontal for stoves, 4.5"x36" cyl, 25-ton, w/hoses & tips, auto return, open center	WX320	540#	\$3,500
3-Point horizontal, 4.5"x48", 25-ton, w/hoses & tips, auto return, open center	WX330	425#	\$3,910
3-Point, vertical, 4"x24" cyl, 20-ton, w/hoses & tips, auto return, open center	WX350	239#	\$2,180
3-Point, vertical, 5"x24" cyl, 31-ton, w/hoses & tips, auto return, closed center	WX360	239#	\$2,770
3-Point, pivoting hort/vert, 4.0"x24" cyl, 20-ton, w/hoses & tips, auto ret, open center	WX370	350#	\$2,540

## SPLITTERS, TRAILED, GAS ENGINE

	Stock No	Weight	List
Horizontal, 4"x 24" cyl, 20-ton, 5 hp honda motor, auto-return, highway tires, 2" ball hitch	WX515T	360#	\$3,230
Horizontal, 4"x24" cyl, 20-ton, 5.5 hp Honda GX160, auto-return, highway tires, 2" ball hitch	WX520	365#	\$3,710
Horizontal, Same as WX520 Light kit included for road travel	WX520L	365#	\$3,820
Horizontal Tall, 4"x24" cyl, 20-ton, 5.5 hp Honda GX160, auto-return, highway tires, 2" ball hitch	WX520T	375#	\$3,980
Pivoting hort/vert, 4"x24" cylinder, 20-ton, 5.5 hp Honda GX160, auto-return, highway tires, 2" ball	WX540	470#	\$4,000
Pivoting hort/vert, Same as WX540 but light kit included for road travel	WX540L	470#	\$4,390
Firebolt regen, horizontal, 4.5"x24" cylinder, 27-ton, 6.5 hp Honda GX200, tires, 2" ball	WXR720	460#	\$4,510
Firebolt regen, pivoting hort/vert, 4.5"x24" cylinder, 27-ton, 6.5 hp Honda GX200, tires, 2" ball	WXR740	570#	\$4,990
Firebolt regen, Same as WXR740 but light kit included for road travel	WXR740L	570#	\$5,240
Horizontal Log Lift, 4.5"x24" cyl, 25-ton, 9 hp Honda GX270, auto-return, highway tires, 2" ball hitch	WX950	785#	\$6,530
Pivoting hort/vert, 5"x24" cylinder, 31-ton, 9 hp Honda GX270, auto-return, highway tires, 2" ball	WX980	635#	\$5,340

## SPLITTERS, SKID STEER MOUNT

	Stock No	Weight	List
Inverted horizontal, 4"x24" cyl, 20-ton, inverted to lift/split/stack, w/hoses & flat tips	WX410	260#	\$2,790
Inverted horizontal, 4.5"x36" cyl, 25-ton, inverted to lift/split/stack, w/hoses & flat tips	WX430	320#	\$4,190
Pivoting hort/vert, 4"x24" cyl, 20-ton, auto-return valve, w/hoses & flat tips	WX470	375#	\$2,940

## SPLITTER OPTIONS

	Stock No	Weight	List
4-Way wedge, SPECIFY Model	W41xx	26#	\$410
Clamp-on log shelf, extra large, for most models	W4211		\$200
Folding shelf for split chunks, for trailed horizontal models	W4212		\$715
Stroke limiter, speeds cycle time for shorter logs, for most models	W42xx		\$330
12" Hitch extension, for 2" ball hitch, for all trailed models	W4202		\$80
All weather cover for splitters	W4204		\$185
REALTREE EDGE camo, special order, ADD			\$300

**FREIGHT:** Freight on Splitters \$800

**FACTORY WARRANTY:** 5 Year consumer, 2 Year commercial; pre-approved dealer labor only; with limitations

All orders are also subject to the dealer Sales & Security Agreement, our latest Discounts and Terms, and Credit Approval

## ROUND BALE HANDLERS

**Stock No Weight List**



**Wrapped Round Bale Handlers**, 1/4" tube arms, greaseable pivots, HD 3 1/2" cylinder, 2500 lb cap.

Wrapped bale handler, flat plate, ADD mount, ADD hoses	WBS-L	420#	\$2,632
Wrapped bale handler, with skid steer mount, ADD hoses	WBS-S	430#	\$2,652
Wrapped bale handler, with Alo/Euro/Global mount, ADD hoses	WBS-ALO	420#	\$2,652



Wrapped bale handler, with JD440/540 mount, ADD hoses	WBS-JD4	430#	\$2,859
Wrapped bale handler, with JD640/740 mount, ADD hoses	WBS-JD6	440#	\$2,859

Wrapped bale handler, with other mount, ADD hoses Call



Dual Round Bale Handler, with mount, ADD 4 hoses	WBG-2		\$6,416
--	-------	--	---------

## SQUARE BALE HANDLERS

**Stock No Weight List**



**Square/Round Bale Hugger**, with 2 cylinders & hoses, ADD couplers

Bale Hugger, 28"-76" opening, arms 42" long, less mount	SBH	540#	\$3,354
Bale Hugger, as above, with skid steer mount	SBH-S		\$3,354
Bale Hugger, as above, with Alo/Euro/Global mount	SBH-E		\$3,354



HD Bale Hugger, opens 30"-87", less mount	SBH-HD		\$4,644
HD Bale Hugger, as above, with skid steer mount	SBH-HD-S	700#	\$4,644
HD Bale Hugger, as above, with Alo/Euro/Global or JD mount	SBH-HD-E	700#	\$4,644

## ROUND BALE SPINNERS

**Stock No Weight List**



Round bale spinner, two tines for penetration & balance, skid steer	RBS-S	310#	\$3,245
Round bale spinner, Alo/Euro/Global mount	RBS-E	310#	\$3,245
Round bale spinner, blank back	RBS	290#	\$3,245
Round bale spinner, 3-point hitch	RBS-T	340#	\$3,324



Round bale unroller, 3-point, for bales up to 4' wide x 6' diameter	BU	215#	\$1,796
HD Round bale unroller, 3-point, for bales up to 5' wide x 6' diameter	BUHD	400#	\$1,909

## POWER RAKE- 9" Drum w/hydraulic Angle & Selector Valve

**Stock No Weight List**



48" Mini-skid steer rake, 48 teeth, for 10-14 gpm, case drain needed	RMS48	500#	\$7,534
60" Skid-steer rake, 60 teeth, for 12-22 gpm, case drain needed	RA60	750#	\$9,391
72" Skid-steer rake, 72 teeth, for 12-22 gpm, case drain needed	RA72	800#	\$10,093
84" Skid-steer rake, 84 teeth, for 12-22 gpm, case drain needed	RA84	950#	\$10,784
Rake with manual angle rather than hydraulic, DEDUCT	RA-Manual		(\$386)

**FREIGHT:** FOB Ellis Warehouse. Delivery 5% of list. **Free delivery for \$6,000 or more (list price, to one store)**

**FACTORY WARRANTY:** 1 Year on parts and pre-approved labor; with limitations

All orders are also subject to the dealer Sales & Security Agreement, our latest Discounts and Terms, and Credit Approval



## 3-POINT FORKLIFTS



H150/1600, Single chain, 3500# capacity, 59" lift, Cat I  
 H200/1600, Single chain, 3500# capacity, 78" lift, Cat I  
 H240/1600, Single chain, 3500# capacity, 94" lift, Cat I  
 H280/1600 Single chain, 3500# capacity, 110" lift, Cat I  
 H240/2000 Double chain, 4400# capacity, 94" lift, Cat II  
 H280/2000 Double chain, 4400# capacity, 110" lift, Cat II

Stock No	Weight	List
H160/150	540#	\$3,737
H200/1600	630#	\$4,040
H240/1600	680#	\$4,357
H280/1600	700#	\$4,663
H240/2000	850#	\$5,830
H280/2000	890#	\$6,145
	70#	\$781
		\$754
HTC1	20#	\$360
HTC2	22#	\$360

Side Shift, 8", with cylinder, ADD hoses SS  
 Mount, for forklift HFM  
 Hydraulic top link, for tilt, 10" stroke  
 Hydraulic top link, for tilt, 14" stroke

## BOX ROTATORS



Class II carriage box rotator, 180-degree rotation, folding side tine  
 Class II carriage box rotator, 180-degree rotation, fixed side tine  
 Class III carriage box rotator, 180-degree rotation, folding side tine  
 Class III carriage box rotator, 180-degree rotation, fixed side tine

Stock No	Weight	List
K53A-O	584#	\$8,436
K53A-I	518#	\$8,230
K53C-O	760#	\$9,053
K53C-I	683#	\$8,848

Top tine, folding  
 Top tine, fixed  
 Skid steer mount adaptor  
 Blank plate for front loader adaptor

132#	\$1,029
132#	\$926
	\$720
	\$751

## PRODUCE TIPPING BUCKETS



**All buckets are 61" deep, 33" high, with rounded edges, w/bearings on pivots, w/hoses.**

59" Tine-Mount bucket, 39 cf, 1 cylinder  
 68" Tine-Mount bucket, 46 cf, 1 cylinder  
 78" Tine-Mount bucket, 53 cf, 1 cylinder  
 88" Tine-Mount bucket, 60 cf, 1 cylinder  
 78" HD Tine-Mount bucket, 53 cf, 1 cylinder  
 88" HD Tine-Mount bucket, 60 cf, 1 cylinder  
 98" HD Tine-Mount bucket, 67 cf, 2 cylinders  
 108" HD Tine-Mount bucket, 74 cf, 2 cylinders  
 59" Carriage-Mount, Class II, 39 cf, 1 cylinder  
 68" Carriage-Mount, Class II, 46 cf, 1 cylinder  
 78" Carriage-Mount, Class II, 53 cf, 1 cylinder  
 88" Carriage-Mount, Class II, 60 cf, 1 cylinder

Stock No	Weight	List
HOD-150	860#	\$3,601
HOD-175	910#	\$3,759
HOD-200	930#	\$3,905
HOD-225	990#	\$4,047
HODZ-200	1430#	\$4,449
HODZ-225	1490#	\$4,599
HODZ-250	1540#	\$4,784
HODZ-275	1600#	\$4,938
HOD-150F	860#	\$4,475
HOD-175F	910#	\$4,619
HOD-200F	930#	\$4,815
HOD-225F	990#	\$4,959
HODZ-200F	1430#	\$6,893
HODZ-225F	1490#	\$7,252
HODZ-250F	1540#	\$7,613
HODZ-275F	1600#	\$7,922

78" HD Carriage-Mount, Class II, 53 cf, 1 cylinder  
 88" HD Carriage-Mount, Class II, 60 cf, 1 cylinder  
 98" HD Carriage-Mount, Class II, 67 cf, 2 cylinders  
 108" HD Carriage-Mount, Class II, 74 cf, 2 cylinders

Class III carriage mount, ADD

\$648

**FREIGHT:** FOB Wellsville, UT. Free delivery to a dealer store

**FACTORY WARRANTY:** 1 Year on parts and pre-approved labor; with limitations

All orders are also subject to the dealer Sales & Security Agreement, our latest Discounts and Terms, and Credit Approval



Single Auger



Double Auger



Forward Facing



3-Point Mount



Dual-Section hi-low deflector



Bolt-on Edge



3" Flared Sides



Skid Shoes



Bolted Fan Shroud

## SINGLE AUGER, 540 PTO

- 46" Blower, 22" high, 14"x 1/4" flighting, 18"x7" fan, 50H chain, Cat 1, for 15hp+
- 54" Blower, 24" high, 14"x 1/4" flighting, 22"x8" fan, 60H chain, Cat 1-2, for 18hp+
- 60" Blower, 24" high, 14" x 1/4" flighting, 22"x8" fan, 60H chain, Cat 1-2, for 20hp+
- 68" Blower, 29" high, 14" x 1/4" flighting, 26"x8" fan, 60H chain, Cat 1-2, for 30hp+

These with hydraulic rotator -

- 72" Blower, 29" high, 16"x 1/2" flighting, 26"x8" fan, 60H chain, Cat 1-2, for 40hp+
- 78" Blower, 32" high, 20"x 1/2" flighting, 27"x10" fan, 60H chain, Cat 2-3, for 50hp+
- 84" Blower, 32" high, 20"x 1/2" flighting, 27"x10" fan, 60H chain, Cat 2-3, for 60hp+
- 96" Blower, 32" high, 20"x 1/2" flighting, 30"x12" fan, 80H chain, Cat 2-3, for 75hp+
- 102" Blower, 32" high, 20"x 1/2" flighting, 30"x12" fan, 80H chain, Cat 2-3, for 80hp+

## Stock No Weight List

WB46	425#	\$3,706
WB54	500#	\$4,483
WB60	550#	\$4,691
WB68	600#	\$4,820

WB72	1000#	\$6,402
WB78	1150#	\$6,992
WB84	1200#	\$7,188
WB96	1250#	\$7,506
WB102	1275#	\$8,014

## DOUBLE AUGER, 540 PTO

- 84" Blower, 36" high, 16" flighting, 30"x12"x1/2" fan, 80H chain, Cat 2-3
- 96" Blower, 43" high, 16" flighting, 30"x12"x1/2" fan, 80H chain, Cat 2-3
- 109" Blower, 43" high, 16" flighting, 32"x12"x1/2" fan, 100H chain, Cat 2-3
- 120" Blower, 47" high, 16" flighting, 32"x12"x1/2" fan, 100H chain, Cat 2-3

## Stock No Weight List

WBD84	1750#	\$8,144
WBD96	2150#	\$9,330
WBD109	2550#	\$10,307
WBD120	2950#	\$15,281

## FORWARD-FACING, 540 PTO



### FORWARD FACING NEW FOR 2021

Drive Forward- No neck strain  
Great for roads and big lots

### INTRODUCTORY PRICING-

Add just \$500 to any single auger snowblower



## Stock No Weight List

These with manual rotator -

WBPT46	430#	\$4,406
WBPT54	515#	\$5,183
WBPT60	560#	\$5,391
WBPT68	610#	\$5,520

These with hydraulic rotator -

WBPT72	1025#	\$7,102
WBPT84	1220#	\$7,692
WBPT96	1280#	\$7,888
WBPT102	1290#	\$8,206

## OPTIONS

- Hydraulic rotator - exchange for manual rotator, WB46-WB68, ADD
- Hydraulic deflector kit for multi-hinge deflector, cylinder, hoses, couplers
- Hydraulic deflector kit with selector valve, needs just 1 remote
- 1000 rpm PTO drop gearbox and drive, 25" PTO height, for WBD96,WBD109,WBD120, ADD

## Stock No Weight List

WBHH		\$350
WBHD-x		\$417
HTHD		\$998
		\$2,439

**FREIGHT:** FOB Wellsville, UT. Delivery \$400 each to the dealer, or \$600 for 2, or \$250 each for 3 or more.

**FACTORY WARRANTY:** 1 Year on parts and pre-approved labor; with limitations

All orders are also subject to the dealer Sales & Security Agreement, our latest Discounts and Terms, and Credit Approval



Includes Drift Cutters, Fan Shroud



Various Motors for Maximum Blowing



46" Mini-Skidsteer Model



HD 4-Blade Fan



Dual-Hinged hi-low Deflector



Motor Gearbox Coupler

## SKID STEER MOUNT, HYDRAULIC

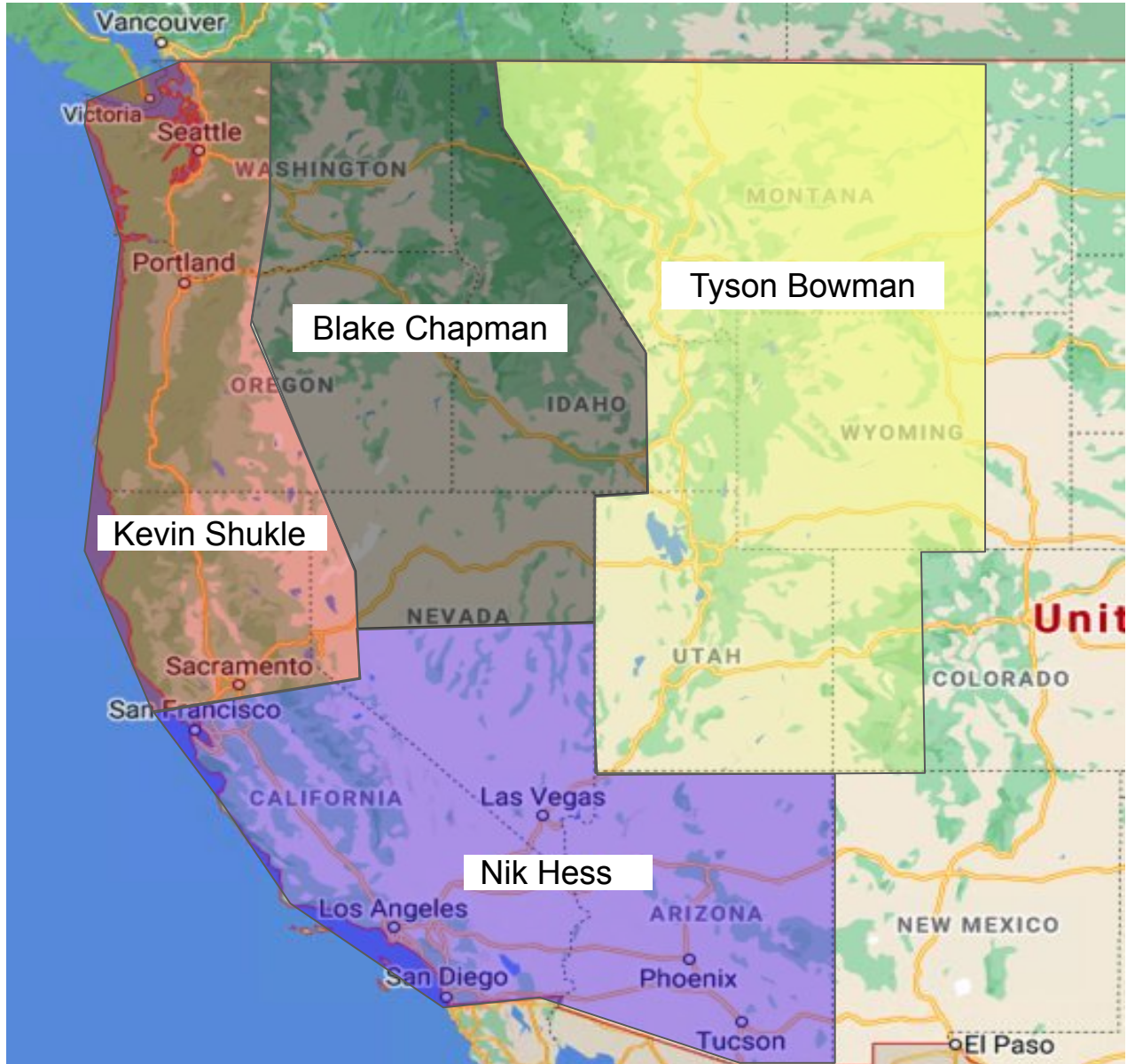
	Stock No	Weight	List
46" Mini-Skid Blower, 14" lighting, 18" fan, CHOOSE mount, ADD motor, ADD rotator	WMS46	450#	\$5,681
60" Blower, 30" high, 1/2" lighting, 26"x8"x3/8" fan, 60H chain, ADD motor, ADD rotator	WSH60	1200#	\$6,644
66" Blower, 30" high, 1/2" lighting, 26"x8"x3/8" fan, 60H chain, ADD motor, ADD rotator	WSH66	1375#	\$7,116
72" Blower, 32" high, 1/2" lighting, 28"x8"x3/8" fan, 60H chain, ADD motor, ADD rotator	WSH72	1425#	\$7,684
78" Blower, 32" high, 1/2" lighting, 28"x8"x3/8" fan, 60H chain, ADD motor, ADD rotator	WSH78	1475#	\$7,973
84" Blower, 32" high, 1/2" lighting, 30"x10"x1/2" fan, 80H chain, ADD motor, ADD rotator	WSH84	1500#	\$8,687
96" Blower, 32" high, 1/2" lighting, 30"x10"x1/2" fan, 80H chain, ADD motor, ADD rotator	WSH96	1550#	\$8,890
Motor, for 14-17 gpm, mounts to gearbox	WHL14		\$466
Motor, for 18-21 gpm, mounts to gearbox	WHL18		\$606
Motor, for 22-25 gpm, mounts to gearbox	WHL20		\$701
Motor, high-flow for 26-30 gpm, mounts to gearbox	WHL26		\$700
Motor, high-flow for 30-40 gpm, mounts to gearbox	WHL30		\$733
Rotator, manual crank	WBMH		\$500
Rotator, hydraulic, for loaders with a second auxiliary hydraulic line	WHHTR		\$625
Deflector control, 12v electric			\$589
Rotator & deflector, hydraulic, both run off the main hydraulic return line, with selector valve	WHHDT		\$1,542

**FREIGHT:** FOB Wellsville, UT. Delivery \$450 each to the dealer, or \$350 each for 2, or \$250 each for 3 or more.

**FACTORY WARRANTY:** 1 Year on parts and pre-approved labor; with limitations

All orders are also subject to the dealer Sales & Security Agreement, our latest Discounts and Terms, and Credit Approval

# TERRITORY REPS:



TYSON BOWMAN	208-851-1011	tyson@ellisequipment.com
KEVIN SHUKLE	509-435-1032	kevin@ellisequipment.com
BLAKE CHAPMAN	208-260-0522	blake@ellisequipment.com
NIK HESS	435-752-4311	nik@ellisequipment.com

# YOUR TEAM

Clair Ellis	President	435-752-4311	clair@ellisequipment.com
Nik Hess	Vice President	435-752-4311	nik@ellisequipment.com
Kameron Olsen	Inside Sales	435-752-4311	kameron@ellisequipment.com
Kevin Shukle	Territory Manager	509-435-1032	kevin@ellisequipment.com
Blake Chapman	Territory Manager	208-260-0522	blake@ellisequipment.com
Tyson Bowman	Territory Manager	208-851-1011	tyson@ellisequipment.com
Shaun Kurek	Parts Manager	435-752-4311	shaun@ellisequipment.com
Gunner Kurek	Parts	435-752-4311	parts@ellisequipment.com
Nicole Schiers	Accounting AP/AR	435-752-4311	ap@ellisequipment.com

## Ellis Equipment

2759 South Highway 89

Wellsville, UT 84339

Main: 435-752-4311

[www.ellisequipment.com](http://www.ellisequipment.com)



AgriMaster

Art's Way  
Since 1956

BALZER

BAUMALIGHT

BAUMAN  
MANUFACTURING

BELLTEC™

Big Jim  
MANUFACTURING

BISON

BROWN  
MANUFACTURING CORP.  
HEAVY DUTY SINCE 1944

DEMCO

DION  
-Ag Inc.

GILTRAP AG  
ENGINEERED PERFORMANCE

Hagedorn

HARRELL  
AG PRODUCTS

JBM  
John BM Mfg Ltd

MARTATCH

REMLINGER  
ISO 9001:2015 Certified

rossi

Sudenga  
INDUSTRIES, INC.

TR Tennessee River

WALLENSTEIN

WIFO  
simply strong!

ELLIS

ellisequipment.com